

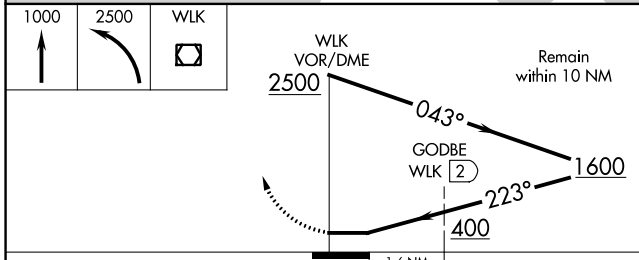
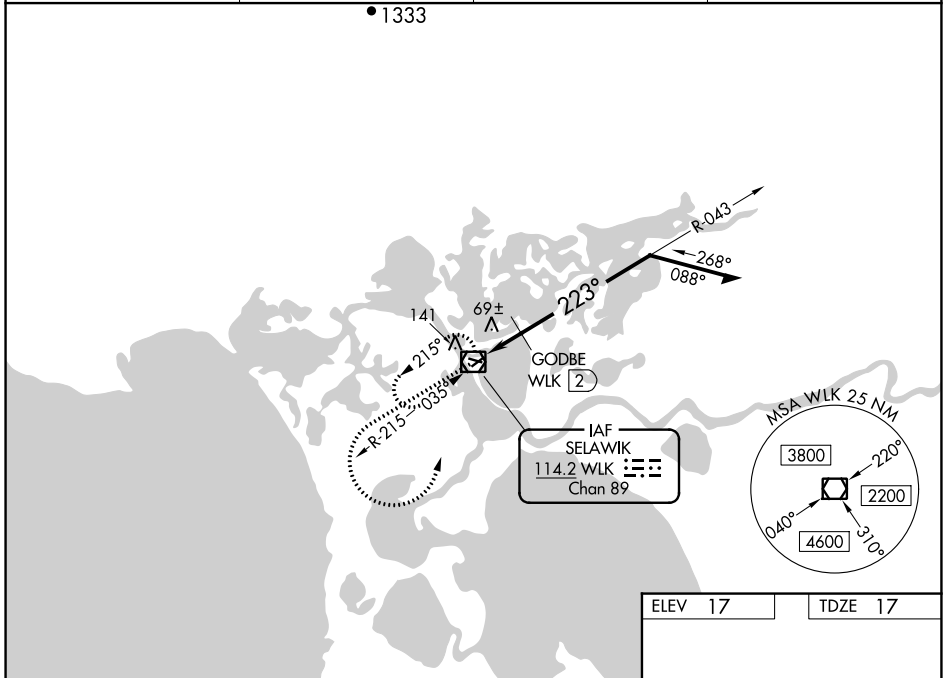
VOR/DME WLK 114.2 Chan 89	APP CRS 223°	Rwy Idg TDZE 17 Apt Elev 17	3002
---	------------------------	---	-------------

VOR RWY 22
SELAWIK (WLK) (PASK)

◀ Circling Rwy 9, 27 NA at night.

MISSED APPROACH: Climb to 1000 then climbing left turn to 2500 direct WLK VOR/DME and hold, continue climb-in-hold to 2500.

AWOS-3P 135.65	ANCHORAGE CENTER 119.2 263.0	KOTZEBUE RADIO 122.5	CTAF 122.7
--------------------------	--	--------------------------------	----------------------



ELEV 17	TDZE 17
---------	---------

223° to VOR/DME

22

2659 X 60

100±

93

3002 X 60

27

MRL Rwy 9-27 and 4-22

CATEGORY	A	B	C	D
S-22	400-1	383 (400-1)	400-1¼	383 (400-1¼)
CIRCLING	480-1 463 (500-1)	580-1 563 (600-1)	580-1½ 563 (600-1½)	580-2 563 (600-2)
GODBE FIX MINIMUMS				
S-22	340-1 323 (400-1)			
CIRCLING	480-1 463 (500-1)	580-1 563 (600-1)	580-1½ 563 (600-1½)	580-2 563 (600-2)