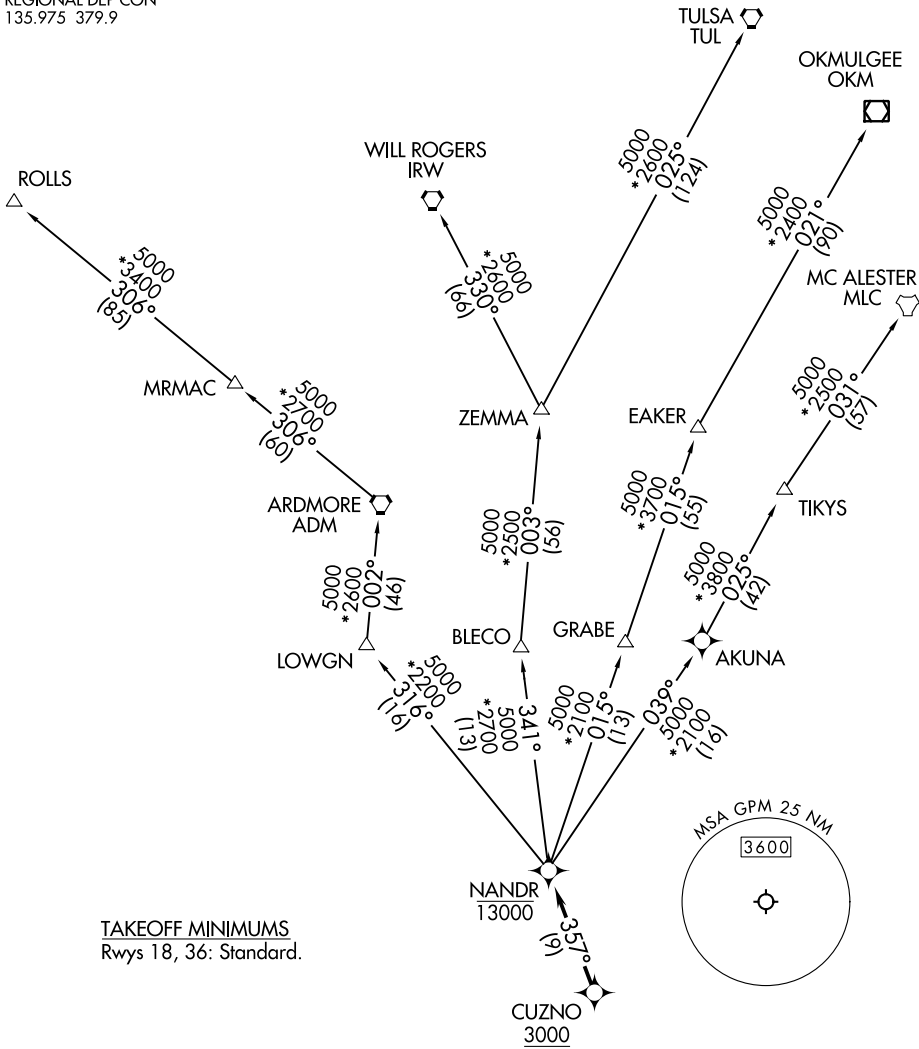


# NANDR TWO DEPARTURE (RNAV)

GND CON  
121.15  
GRAND PRAIRIE TOWER ★  
128.55 (CTAF)  
REGIONAL DEP CON  
135.975 379.9

RNAV 1 - DME/DME/IRU or GPS.  
RADAR required.

**TOP ALTITUDE:  
ASSIGNED BY ATC**



TAKEOFF MINIMUMS  
Rwys 18, 36: Standard.

NOTE: EAKER transition: For TUL terminal arrivals only.  
NOTE: TULSA transition: For all aircraft overflying TUL VORTAC.  
NOTE: Aircraft arriving to the Oklahoma City terminal area, file and expect the ZEMMA enroute transition.

(NARRATIVE ON FOLLOWING PAGE)

NOTE: Chart not to scale.

# NANDR TWO DEPARTURE (RNAV)

SC-2, 11 JUL 2024 to 08 AUG 2024

SC-2, 11 JUL 2024 to 08 AUG 2024



DEPARTURE ROUTE DESCRIPTION

TAKEOFF RUNWAY 18: Climb on heading 192° to 2500 before proceeding on course or as assigned by ATC, thence . . . .

TAKEOFF RUNWAY 36: Climb on heading 357° to 1400 before turning southbound or as assigned by ATC, thence . . . .

. . . . expect RADAR vectors to cross CUZNO at or above 3000, then on track 357° to cross NANDR at or below 13000, then on assigned transition.

EAKER TRANSITION (NANDR2.EAKER)

MC ALESTER TRANSITION (NANDR2.MLC)

OKMULGEE TRANSITION (NANDR2.OKM)

ROLLS TRANSITION (NANDR2.ROLLS)

TULSA TRANSITION (NANDR2.TUL)

WILL ROGERS TRANSITION (NANDR2.IRW)

ZEMMA TRANSITION (NANDR2.ZEMMA)

SC-2, 11 JUL 2024 to 08 AUG 2024

SC-2, 11 JUL 2024 to 08 AUG 2024