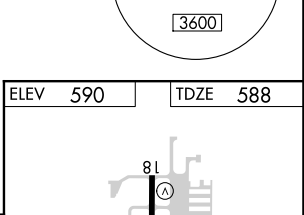
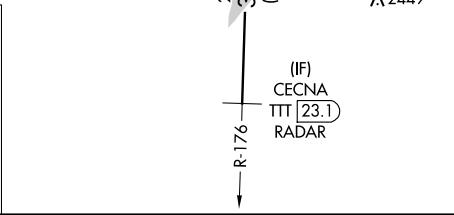
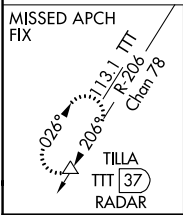
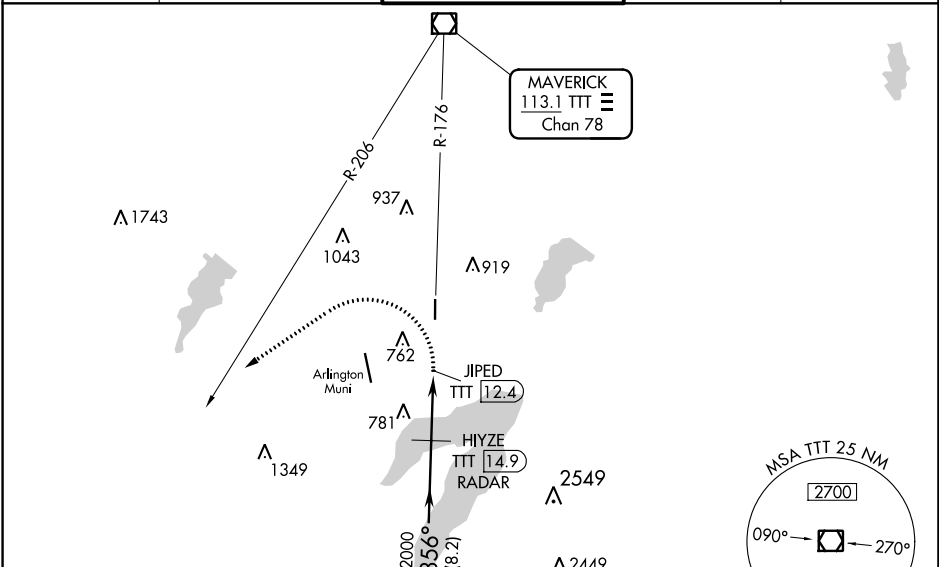


VOR/DME TTT 113.1 Chan 78	APP CRS 356°	Rwy Idg 4001 TDZE 588 Apt Elev 590
---	------------------------	---

VOR RWY 36

GRAND PRAIRIE MUNI (GPM)

RADAR and DME required.		MISSED APPROACH: Climbing left turn to 3000 on heading 230° and TTT VOR/DME R-206 to TILLA/37 DME/RADAR and hold.		
Circling Rwy 18 NA at night.		GRAND PRAIRIE TOWER * 128.55 (CTAF)	GND CON 121.15	UNICOM 123.075



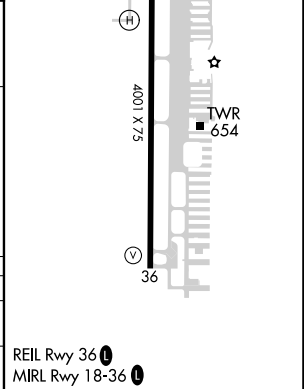
VGSI and descent angles not coincident (VGSI Angle 4.00/TCH 37).

CECNA TTT 23.1 RADAR	HIYZE TTT 14.9 RADAR	JIPED TTT 12.4
----------------------------	----------------------------	-------------------

2000 — 356° — 2000 — 3.00° TCH 37 — 3000 hdg 230° TTT R-206 TILLA △

8.2 NM 2.5 NM

CATEGORY	A	B	C	D
S-36	1040-2½	452 (500-2½)		NA
CIRCLING	1100-2½ 510 (600-2½)	1280-2½ 690 (700-2½)		NA



SC-2, 11 JUL 2024 to 08 AUG 2024

SC-2, 11 JUL 2024 to 08 AUG 2024