

RADAR and DME required.

**TOP ALTITUDE:  
ASSIGNED BY ATC**

TAKEOFF MINIMUMS  
Rwys 18, 36: Standard.

REGIONAL DEP CON  
125.2 343.65  
CTAF  
122.975

GARLAND FIVE DEPARTURE  
(GARLS.TT) 251ANZ4

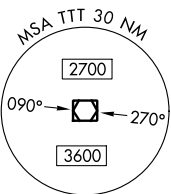
(GARLS.TT) 24025

AL-9212 (FAA)

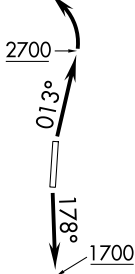
MID-WAY RGNL (JTWY)  
MIDLOTHIAN/WAXAHACHIE, TEXAS

NOTE: SOLDO Transition: ATC assigned.

MAVERICK  
113.1 TTT  
Chan 78



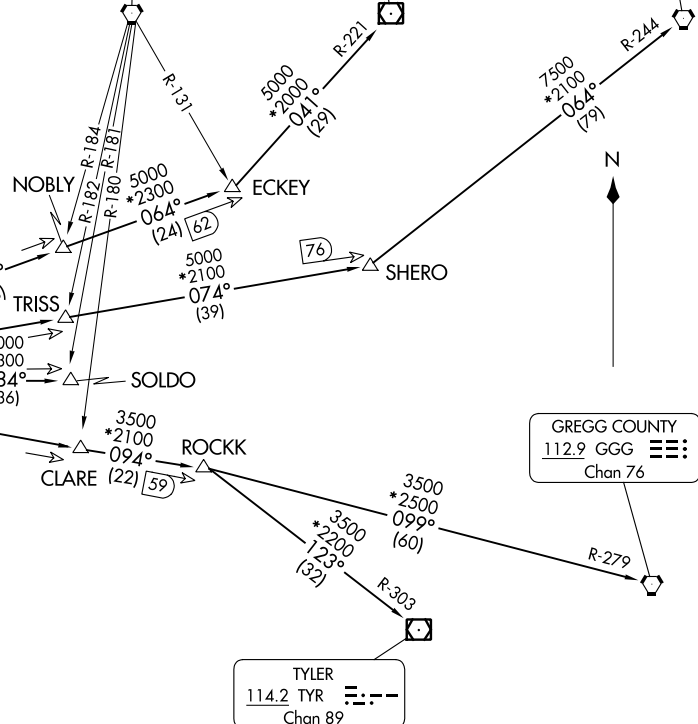
NOTE: Chart not to scale.



BONHAM  
114.6 BYP  
Chan 93

PARIS  
113.6 PRX  
Chan 83

TEXARKANA  
116.3 TXK  
Chan 110



(CONTINUED ON FOLLOWING PAGE)

# GARLAND FIVE DEPARTURE



## DEPARTURE ROUTE DESCRIPTION

TAKEOFF RUNWAY 18: Climb on heading 178° to 1700 before proceeding northbound.

TAKEOFF RUNWAY 36: Climb on heading 013° to 2700 before turning left.

When entering controlled airspace, fly assigned heading for RADAR vectors to appropriate route. Maintain ATC assigned altitude.

GREGG COUNTY TRANSITION (GARL5.GGG): From over TTT VOR/DME on TTT R-094 to ROCKK, then on GGG R-279 to GGG VORTAC.

PARIS TRANSITION (GARL5.PRX): From over TTT VOR/DME on TTT R-064 to ECKEY, then on PRX R-221 to PRX VOR/DME.

SOLDO TRANSITION (GARL5.SOLDO): From over TTT VOR/DME on TTT R-084 to SOLDO.

TEXARKANA TRANSITION (GARL5.TXK): From over TTT VOR/DME on TTT R-074 to SHERO, then on TXK R-244 to TXK VORTAC.

TYLER TRANSITION (GARL5.TYR): From over TTT VOR/DME on TTT R-094 to ROCKK, then on TYR R-303 to TYR VOR/DME.

SC-2, 11 JUL 2024 to 08 AUG 2024

SC-2, 11 JUL 2024 to 08 AUG 2024