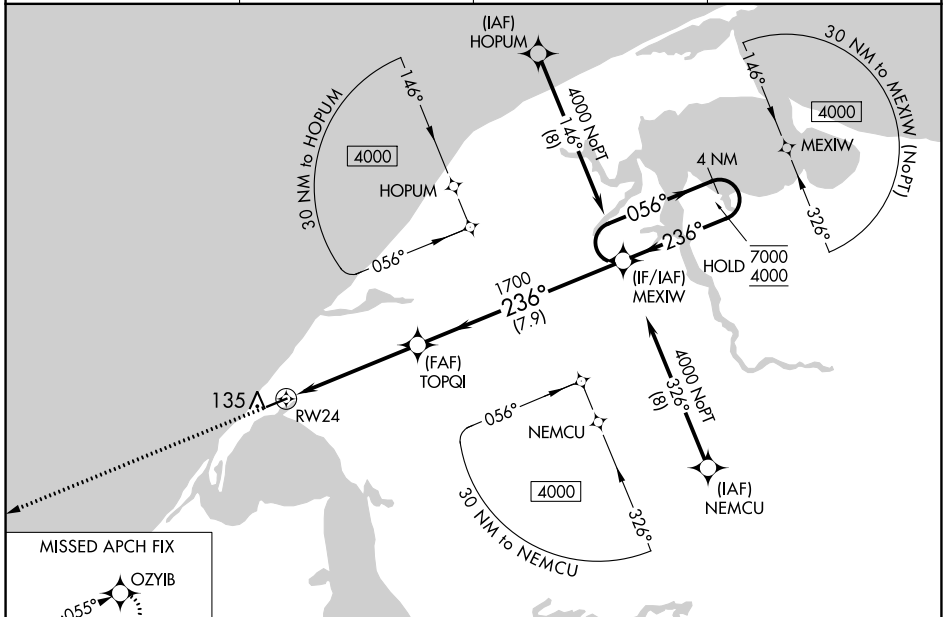


WAAS CH 56642 W24A	APP CRS 236°	Rwy Idg 4494 TDZE 45 Apt Elev 45
--	------------------------	---

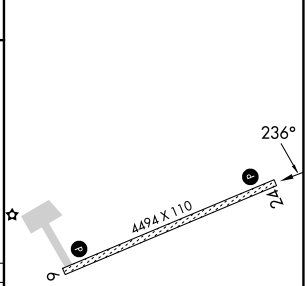
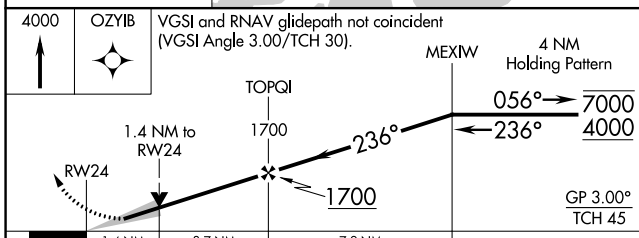
RNAV (GPS) RWY 24

WAINWRIGHT (AWI) (PAWI)

RNP APCH - GPS.		MISSED APPROACH: Climb to 4000 direct OZYIB and hold, continue climb-in-hold to 4000	
For uncompensated Baro-VNAV systems, LNAV/VNAV NA below -20°C or above 54°C.		ASOS-3 132.25	ANCHORAGE CENTER 135.3 239.25
		BARROW RADIO 122.5	CTAF 122.8



ELEV 45	TDZE 45
---------	---------



CATEGORY	A	B	C	D
LPV DA		295-1	250 (300-1)	
LNAV/VNAV DA		295-1	250 (300-1)	
LNAV MDA	520-1	475 (500-1)	520-1 $\frac{3}{8}$	475 (500-1 $\frac{3}{8}$)
CIRCLING	520-1	475 (500-1)	520-1 $\frac{1}{2}$ 475 (500-1 $\frac{1}{2}$)	600-2 555 (600-2)

MIRL Rwy 6-24
REIL Rwy 6 and 24

AK, 11 JUL 2024 to 05 SEP 2024

AK, 11 JUL 2024 to 05 SEP 2024