

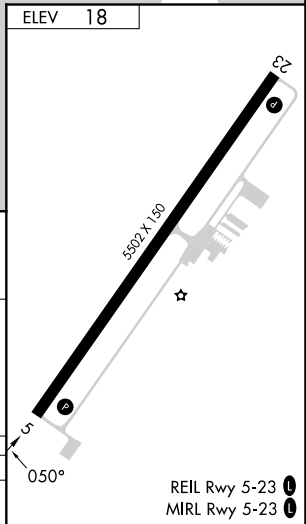
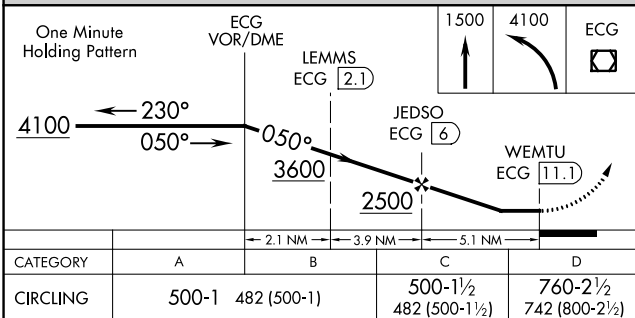
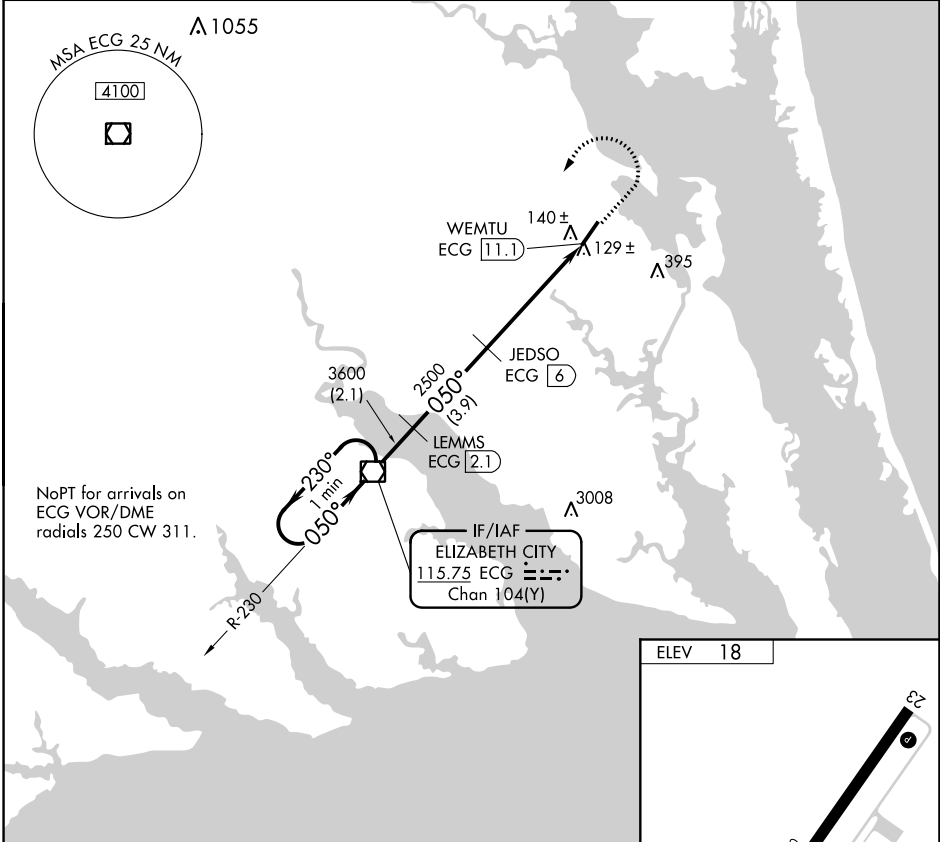
VOR/DME ECG <b>115.75</b> Chan <b>104(Y)</b>	APP CRS <b>050°</b>	Rwy Idg TDZE Apt Elev	<b>N/A</b> <b>N/A</b> <b>18</b>
--	------------------------	-----------------------------	---------------------------------------

**VOR/DME-A**  
CURRITUCK COUNTY RGNL (ONX)

When local altimeter setting not received, use Oceana NAS/Apollo Soucek altimeter setting and increase all MDA 60 feet.  
 Procedure NA when tethered balloon located approximately 11.4 NM southwest of airport is flying.

**MISSED APPROACH:** Climb to 1500 then climbing left turn to 4100 direct ECG VOR/DME and hold, continue climb-in-hold to 4100.

AWOS-3 <b>119.775</b>	OCEANA APP CON <b>123.9 266.8</b>	CTAF <b>122.9 0</b>
--------------------------	--------------------------------------	------------------------



SE-2, 11 JUL 2024 to 08 AUG 2024

SE-2, 11 JUL 2024 to 08 AUG 2024