

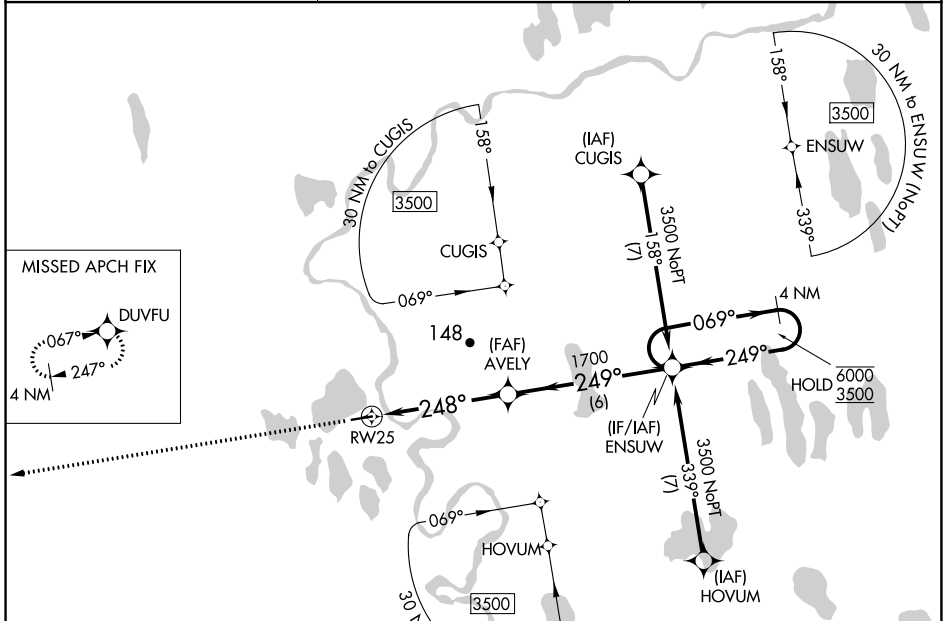
WAAS CH 53543 W25A	APP CRS 248°	Rwy Idg TDZE Apt Elev	4370 101 101
--	------------------------	-----------------------------	---

RNAV (GPS) RWY 25

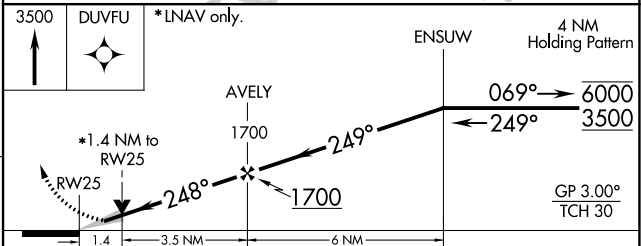
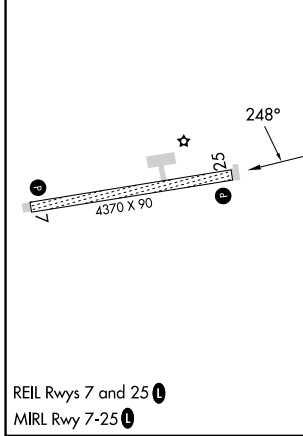
ATQASUK EDWARD BURNELL SR MEML (ATK)(PATQ)

RNP APCH.	MISSED APPROACH: Climb to 3500 direct DUVFU and hold, continue climb-in-hold to 3500.
-----------	---

AWOS-3P 119.925	ANCHORAGE CENTER 135.3 239.25	CTAF 122.9
---------------------------	---	----------------------



ELEV 101	TDZE 101
----------	----------



CATEGORY	A	B	C	D
LPV DA		351-1	250 (300-1)	
LNAV/VNAV DA		351-1	250 (300-1)	
LNAV MDA	560-1	459 (500-1)	560-1 $\frac{1}{8}$	459 (500-1 $\frac{1}{8}$)
<input checked="" type="checkbox"/> CIRCLING	560-1	459 (500-1)	560-1 $\frac{1}{2}$ 459 (500-1 $\frac{1}{2}$)	700-2 599 (600-2)

REIL Rwy 7 and 25
MIRL Rwy 7-25

ATQASUK, ALASKA
Amdt 2 31DEC20

ATQASUK EDWARD BURNELL SR MEML (ATK)(PATQ)
70°28'N-157°26'W

RNAV (GPS) RWY 25

AK, 11 JUL 2024 to 05 SEP 2024

AK, 11 JUL 2024 to 05 SEP 2024