

WAAS CH <b>69323</b> <b>W14A</b>	APP CRS <b>145°</b>	Rwy Idg TDZE Apt Elev	<b>5499</b> <b>1243</b> <b>1256</b>
--	------------------------	-----------------------------	---

# RNAV (GPS) RWY 14

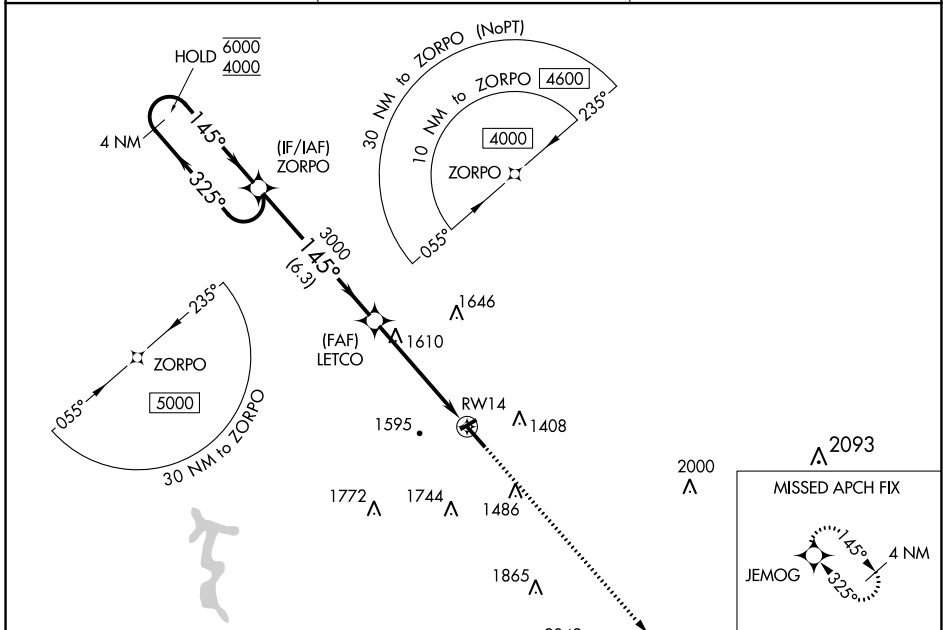
WENDELL H FORD (CPF)

RNP APCH-GPS.

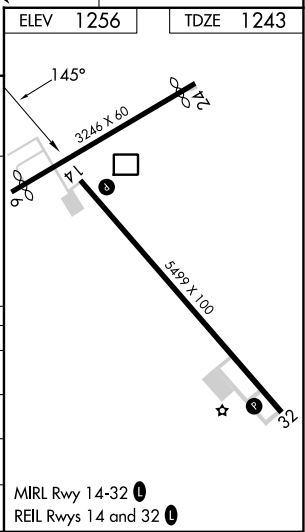
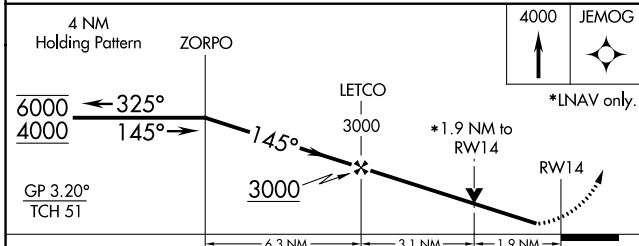
**⚠** Circling Rwy 24, 32 NA at night. For uncompensated Baro-VNAV systems, LNAV/VNAV NA below -17°C or above 54°C. Rwy 14 helicopter visibility reduction below ¾ SM NA.

MISSED APPROACH: Climb to 4000 direct JEMOG and hold.

AWOS-3 <b>119.025</b>	INDIANAPOLIS CENTER <b>126.575 257.85</b>	UNICOM <b>122.7 (CTAF) 0</b>
--------------------------	--	---------------------------------



ELEV	1256	TDZE	1243
------	------	------	------



CATEGORY	A	B	C	D
LPV DA	1443-¾	200 (200-¾)	1493-¾ 250 (300-¾)	NA
LNAV/VNAV DA	1858-2 615 (700-2)		NA	
LNAV MDA	1880-1	637 (700-1)	1880-1¾	637 (700-1¾)
<b>C</b> CIRCLING	2000-1 744 (800-1)	2060-1¼ 804 (900-1¼)	2060-2¼ 804 (900-2¼)	2140-3 884 (900-3)

MIRL Rwy 14-32 0  
REIL Rws 14 and 32 0

SE-1, 11 JUL 2024 to 08 AUG 2024

SE-1, 11 JUL 2024 to 08 AUG 2024