

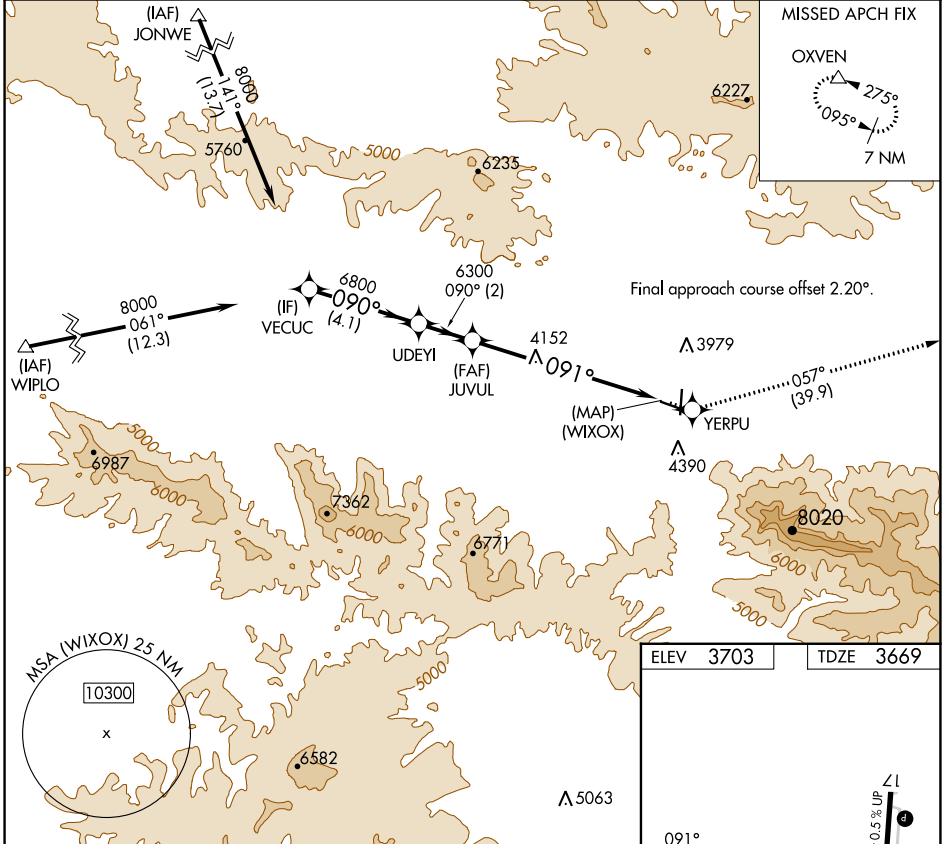
WAAS CH 73010 W09A	APP CRS 091°	Rwy Idg 4100 TDZE 3669 Apt Elev 3703
--	------------------------	---

RNAV (GPS) Z RWY 9

GRANT COUNTY RGNL/OGLIVIE FLD (GCD)

RNP APCH - GPS.	MISSED APPROACH: Climb to 12000 direct YERPU and on track 057° to OXVEN and hold, continue climb-in-hold to 12000.
▼ When local altimeter setting not received, procedure NA. Rwy 9 helicopter visibility reduction below 3/4 SM NA.	

AWOS-3 118.375	SEATTLE CENTER 128.15 257.75	UNICOM 122.8 (CTAF) 0
--------------------------	--	---------------------------------



NW-1, 11 JUL 2024 to 08 AUG 2024

NW-1, 11 JUL 2024 to 08 AUG 2024

VECUC		UDEYI		JUVUL		YERPU		OXVEN	
8000		6800		6300		12000		4100 X 60	
GP 3.40°		090°		091°		091°		057°	
TCH 54		4.1 NM		2 NM		7.1 NM		1.0% UP	
CATEGORY		A		B		C		D	
LPV DA		4269-2		600 (600-2)		NA		REIL Rwys 17 and 9 MRL Rwys 9-27 and 17-35	