

APP CRS 047°	Rwy Idg TDZE Apt Elev	N/A N/A 730
------------------------	-----------------------------	----------------------------------------

RNAV (GPS)-A

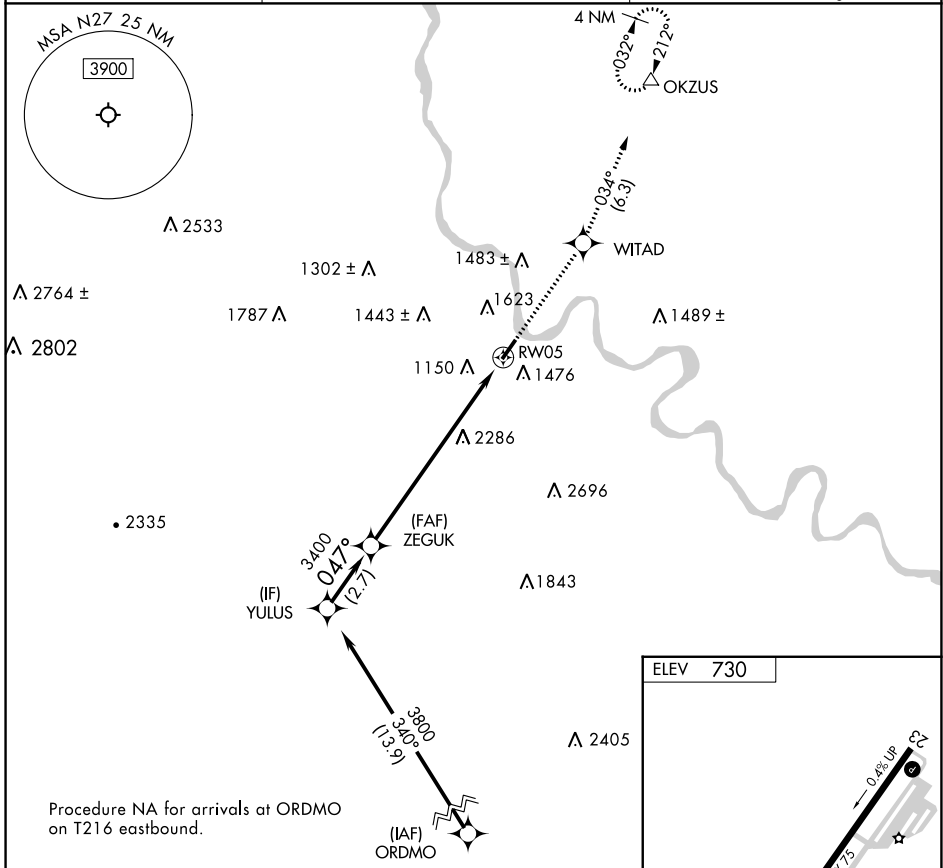
BRADFORD COUNTY (N27)

RNP APCH - GPS.

▼ When local altimeter setting not received, use Elmira altimeter setting and increase all MDAs
▲NA 120 feet. Rwy 5 helicopter visibility reduction below 1 SM NA. Procedure NA at night.

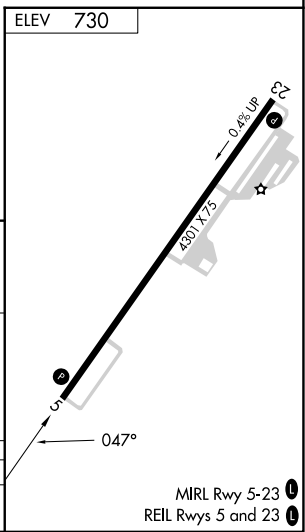
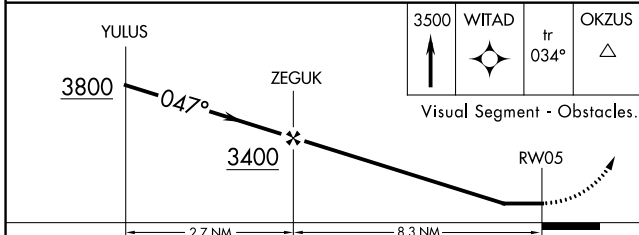
MISSED APPROACH: Climb to 3500 direct WITAD and on track 034° to OKZUS and hold.

AWOS-3 119.925	BINGHAMTON APP CON ★ 118.6 257.625	UNICOM 123.0 (CTAF) ①
--------------------------	----------------------------------------------	---------------------------------



NE-4, 11 JUL 2024 to 08 AUG 2024

NE-4, 11 JUL 2024 to 08 AUG 2024



CATEGORY	A	B	C	D
① CIRCLING	2680-1¼ 1950 (2000-1¼)	2680-1½ 1950 (2000-1½)	NA	