

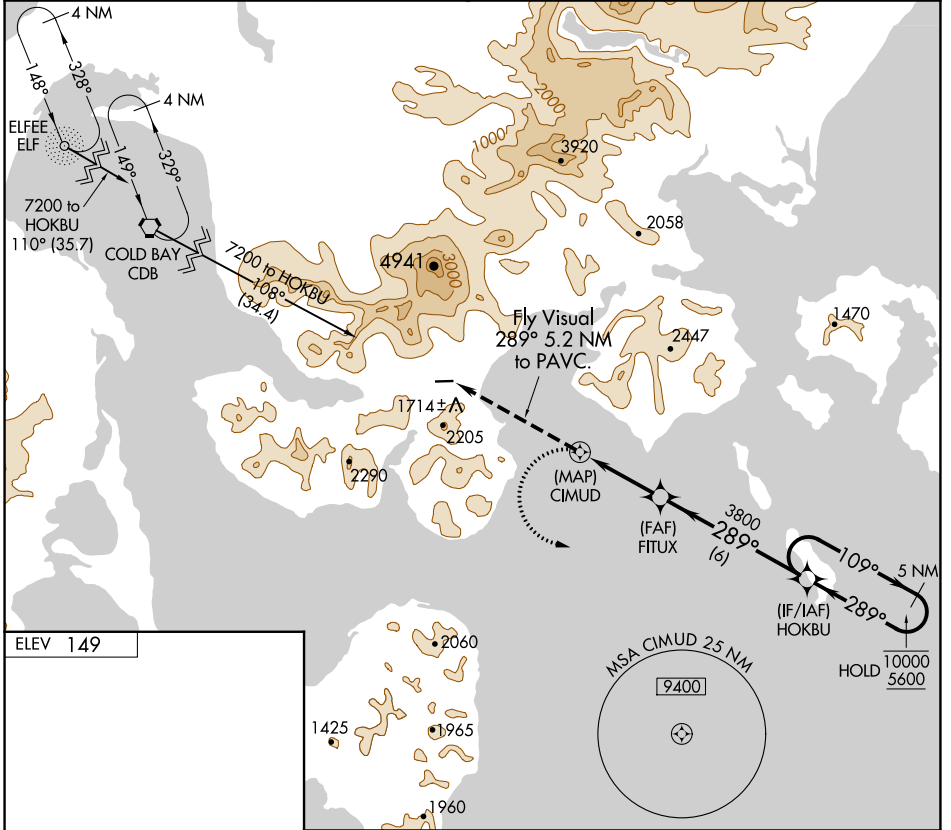
APP CRS 289°	Rwy Idg TDZE Apt Elev	N/A N/A 149
------------------------	-----------------------------	----------------------------------------

RNAV (GPS)-A

KING COVE (KVC)(PAVC)

RNP APCH.	MISSED APPROACH: Climbing left turn to 5600 direct HOKBU and hold.
Procedure NA at night. Circling NA north Rwy 8 and 26. -9°C	

AWOS-3P 118.325	ANCHORAGE CENTER 118.5 278.3	CTAF 122.9
---------------------------	----------------------------------------	----------------------

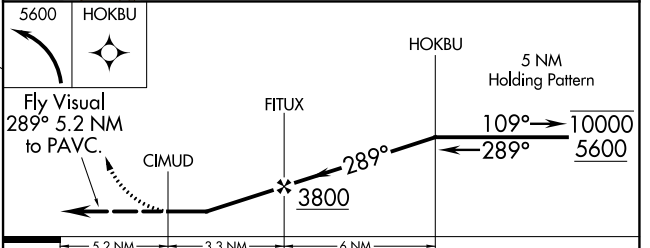


ELEV 149

Fly Visual 289° 5.2 NM to PAVC.

REIL Rwys 8 and 26

MIRL Rwy 8-26



CATEGORY	A	B	C	D
CIRCLING	2080-6 1931 (2000-6)	2520-6 2371 (2400-6)	NA	

AK, 11 JUL 2024 to 05 SEP 2024

AK, 11 JUL 2024 to 05 SEP 2024