

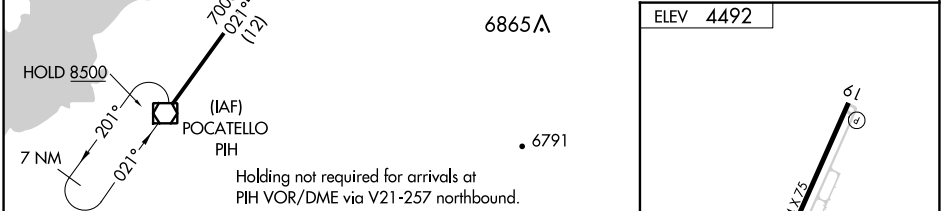
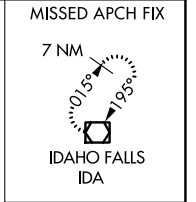
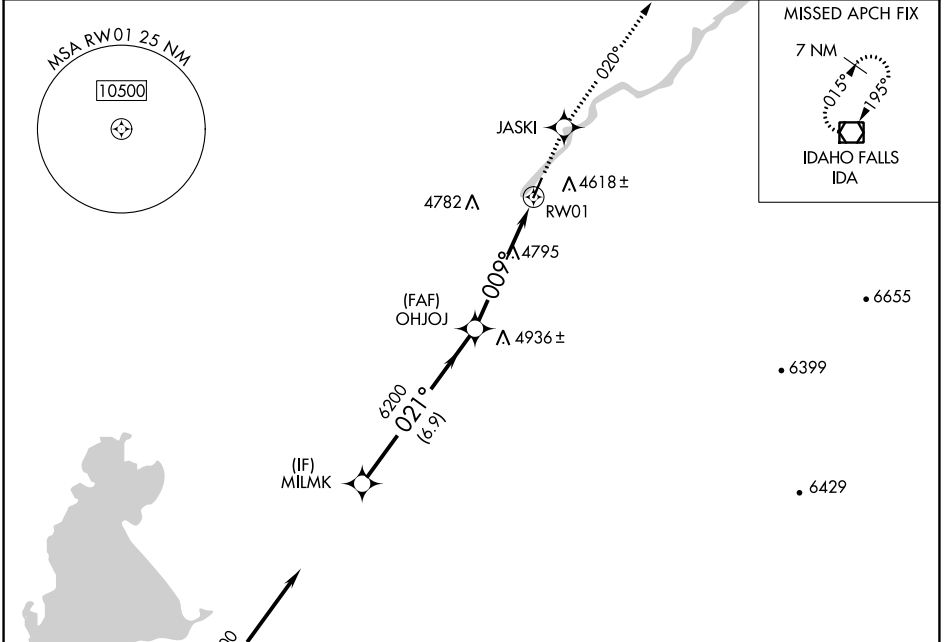
APP CRS	Rwy Idg	N/A
009°	TDZE	N/A
	Apt Elev	4492

RNAV (GPS)-B

MCCARLEY FLD (U02)

RNP APCH.	MISSED APPROACH: Climb to 7000 direct JASKI and on 020° track to IDA VOR/DME and hold.
<p>▼ Use Pocatello altimeter setting, when not received use Idaho Falls altimeter setting. Helicopter visibility reduction below 1 SM NA.</p> <p>▲ NA</p>	

SALT LAKE CITY CENTER 128.35 239.25	UNICOM 122.8 (CTAF)
---	-------------------------------

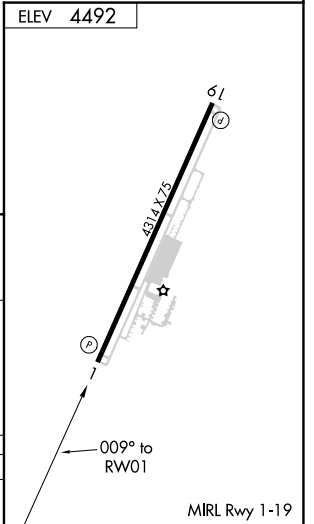


VGSI and descent angle not coincident (VGSI Angle 3.00/TCH 39).

	7000	JASKI	020° tr	IDA
		▲	✧	◻

Procedure Turn NA	MILMK	OHJOJ	RW01
	7000	6200	
	021°	3.05° TCH 40	009°
	6.9 NM	5.2 NM	

CATEGORY	A	B	C	D
CIRCLING	5380-1¼	888 (900-1¼)	5380-2¾ 888 (900-2¾)	5900-3 1408 (1500-3)



NW-1, 11 JUL 2024 to 08 AUG 2024

NW-1, 11 JUL 2024 to 08 AUG 2024