

WAAS CH <b>58033</b> <b>W16A</b>	APP CRS <b>159°</b>	Rwy Idg TDZE Apt Elev	<b>4007</b> <b>1368</b> <b>1368</b>
--	------------------------	-----------------------------	---

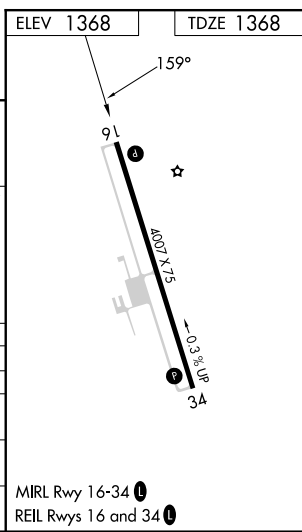
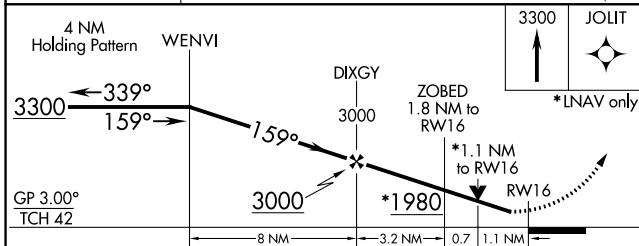
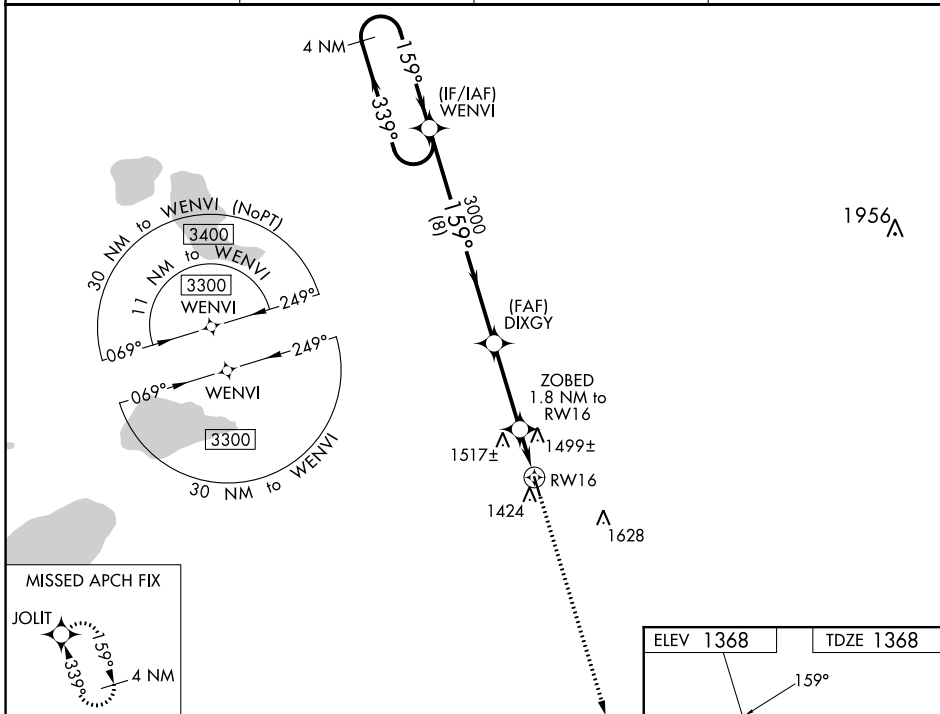
# RNAV (GPS) RWY 16

WADENA MUNI (ADC)

**⚠** DME/DME RNP-0.3 NA. Helicopter visibility reduction below 1 SM NA. VDP and Baro-VNAV NA with Staples altimeter setting. When local altimeter setting not received, use Staples altimeter setting and increase all DA 52 feet and all MDA 60 feet, increase LNAV/VNAV visibility 1/8 mile, LNAV Cat C visibility 1/4 mile and Circling Cat C visibility 1/4 mile. For uncompensated Baro-VNAV systems, LNAV/VNAV NA below -17°C (1°F) or above 54°C (130°F).

**MISSED APPROACH:**  
Climb to 3300 direct JOLIT and hold.

AWOS-3PT <b>118.875</b>	MINNEAPOLIS CENTER <b>126.1 269.2</b>	GCO <b>121.725</b>	UNICOM <b>122.8 (CTAF) 0</b>
----------------------------	--	-----------------------	---------------------------------



CATEGORY	A	B	C	D
LPV DA	1631-1	263 (300-1)		NA
LNAV/VNAV DA	1767-1 3/8	399 (400-1 3/8)		NA
LNAV MDA	1760-1	392 (400-1)	1760-1 1/8 392 (400-1 1/8)	NA
<b>C</b> CIRCLING	1780-1 412 (500-1)	1820-1 452 (500-1)	1940-1 1/2 572 (600-1 1/2)	NA

MIRL Rwy 16-34 **0**  
REIL Rwy 16 and 34 **0**

NC-1, 11 JUL 2024 to 08 AUG 2024

NC-1, 11 JUL 2024 to 08 AUG 2024