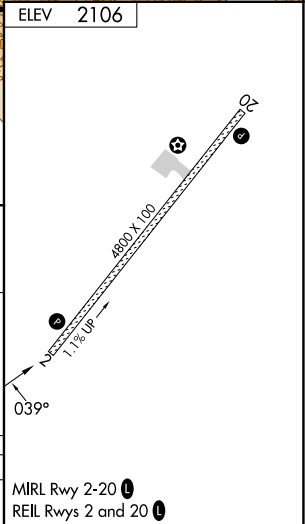
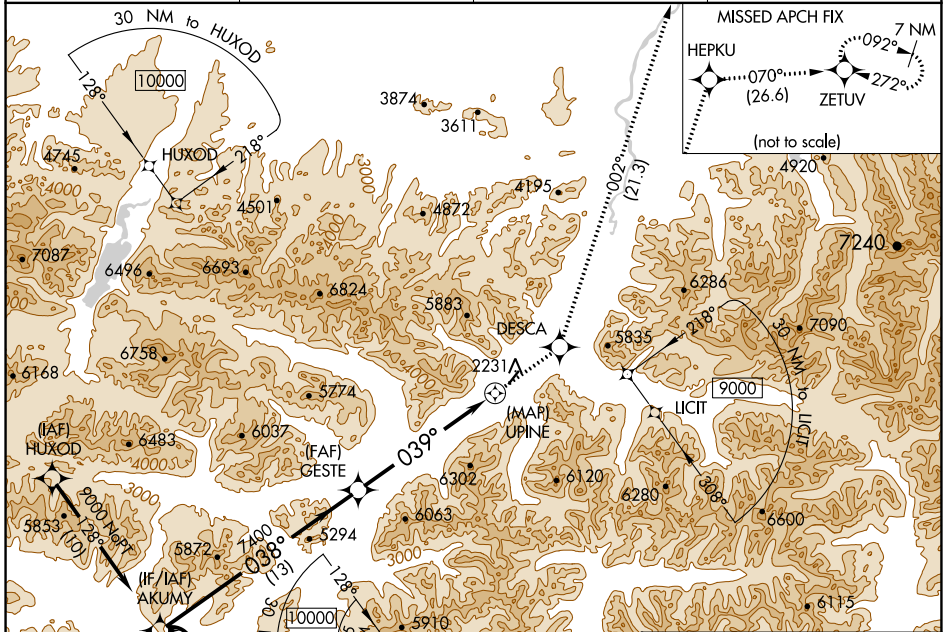


APP CRS	Rwy ldg	N/A
039°	TDZE	N/A
	Apt Elev	2106

# RNAV (GPS)-A

## ANAKTUVUK PASS (AKP) (PAKP)

RNP APCH.		MISSED APPROACH: Climb to 10000 direct DESCA and on track 002° to HEPKU and track 070° to ZETUV and hold.	
<p>Circling NA west of Rwy 2-20. -2°C</p>			
AWOS-3P	ANCHORAGE CENTER	FAIRBANKS RADIO	UNICOM
135.75	124.6 352.0	122.15	122.8 (CTAF)



7 NM Holding Pattern	AKUMY	10000	DESCA	tr 002°	HEPKU	tr 070°	ZETUV
12000 ← 218°	9000 ← 038°	038°	GESTE	039°	UPINE	039°	
		13 NM	9 NM	0.9 NM			
CATEGORY	A	B	C	D			
CIRCILING	5620-1¼ 3514 (4000-1¼)	5620-1½ 3514 (4000-1½)	6240-3	4134 (4200-3)	MIRL Rwy 2-20 REIL Rws 2 and 20		

AK, 11 JUL 2024 to 05 SEP 2024

AK, 11 JUL 2024 to 05 SEP 2024