

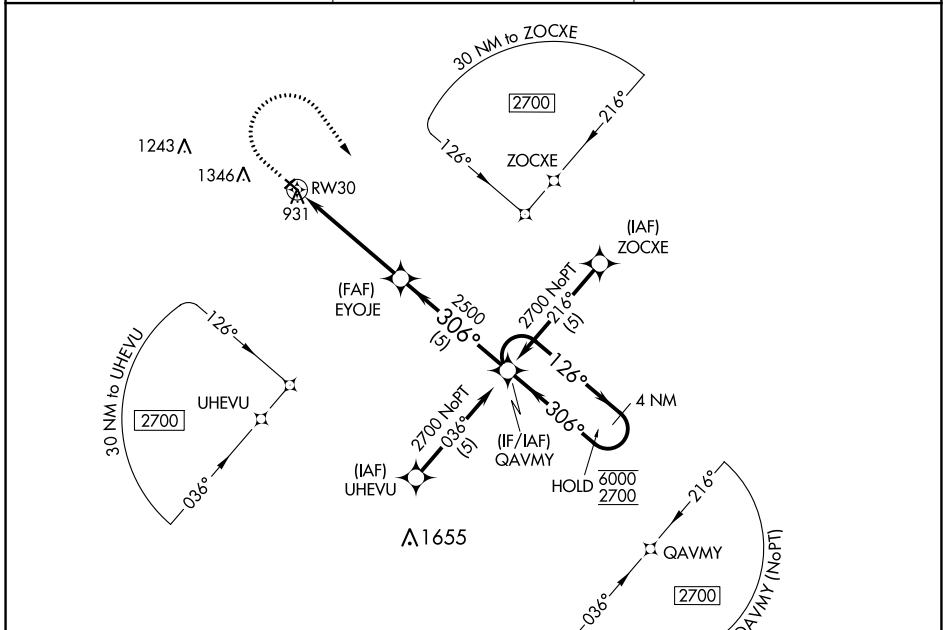
APP CRS <b>306°</b>	Rwy Idg TDZE Apt Elev	<b>3199</b> <b>888</b> <b>888</b>
------------------------	-----------------------------	---

# RNAV (GPS) RWY 30

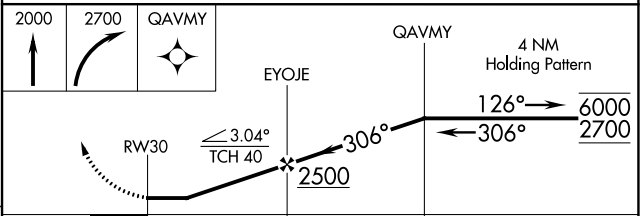
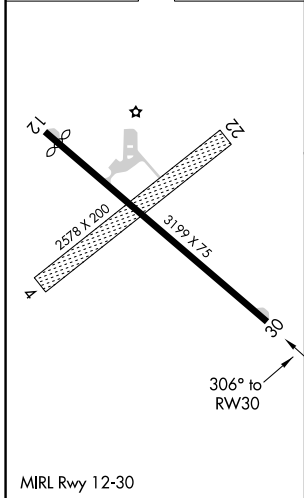
WARREN MUNI (D37)

RNP APCH.	MISSED APPROACH: Climb to 2000 then climbing right turn to 2700 direct QAVMY and hold.
<p>▼ Circling NA to Rws 4 and 22. Rwy 30 helicopter visibility reduction below 3/4 SM NA. Use Crookston altimeter setting.</p> <p>▲ NA</p>	

CKN AWOS-3 <b>126.425</b>	GRAND FORKS APP CON ★ <b>118.1 318.1</b>	UNICOM <b>122.8 (CTAF)</b>
------------------------------	---	-------------------------------



ELEV 888	<b>D</b>	TDZE 888
----------	----------	----------



CATEGORY	A	B	C	D
LNAV MDA	1480-1	592 (600-1)	NA	
CIRCLING	1480-1	1760-1 1/4	NA	
	592 (600-1)	872 (900-1 1/4)		

NC-1, 11 JUL 2024 to 08 AUG 2024

NC-1, 11 JUL 2024 to 08 AUG 2024