

| | | |
|-------------|----------|-------------|
| APP CRS | Rwy Idg | 4000 |
| 179° | TDZE | 1092 |
| | Apt Elev | 1092 |

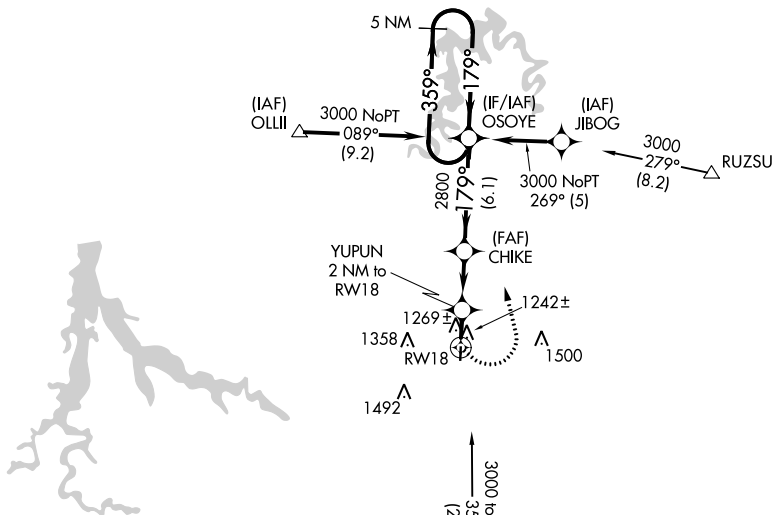
RNAV (GPS) RWY 18

BOLIVAR MUNI (M17)

| | |
|--|--|
| <p>▽ DME/DME RNP-0.3 NA. △ NA Visibility reduction by helicopters NA. Use Springfield-Branson Ntl altimeter setting. Straight-in and Circling Rwy 18 NA at night.</p> | <p>MISSED APPROACH: Climbing left turn to 3000 direct OSOYE and hold.</p> |
| <p>SPRINGFIELD APP CON 124.95 318.2</p> | <p>UNICOM 123.0 (CTAF) 1</p> |

NC-3, 11 JUL 2024 to 08 AUG 2024

NC-3, 11 JUL 2024 to 08 AUG 2024



Holding not required for arrivals on SGF VORTAC
 airway radials 075 CW 272.

