

VORTAC SGF 116.9 Chan 116	APP CRS 353°	Rwy Idg TDZE Apt Elev	4000 1092 1092
---	------------------------	-----------------------------	---

VOR/DME RWY 36

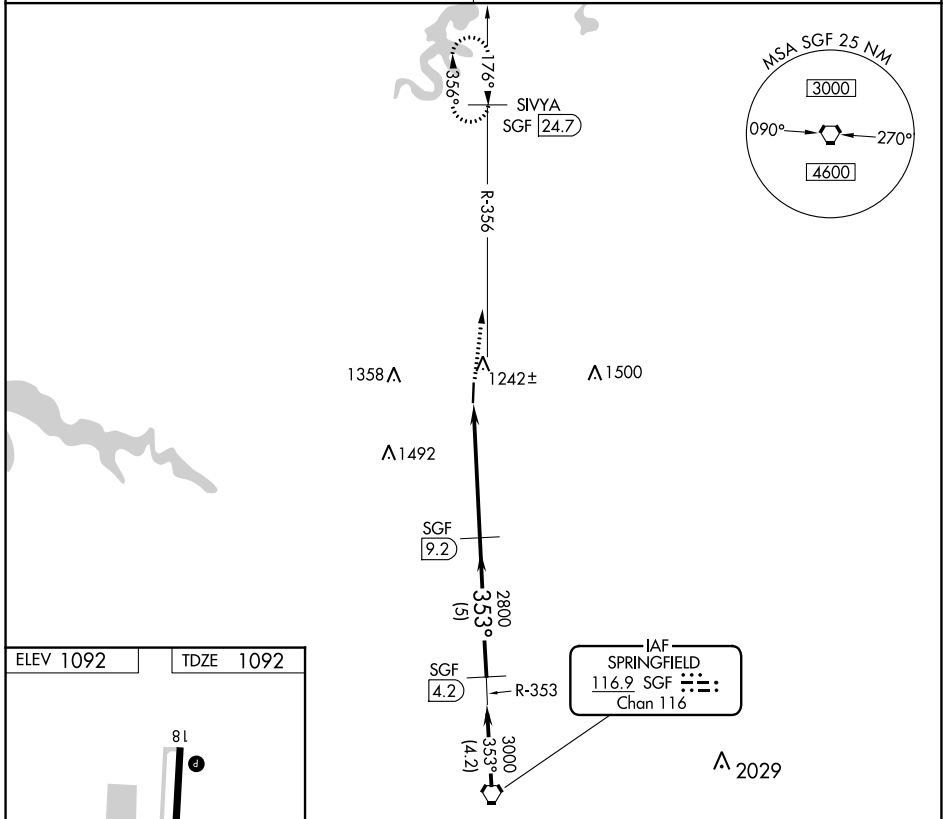
BOLIVAR MUNI (M17)

NA Use Springfield-Branson Ntl altimeter setting. Circling Rwy 18 NA at night.

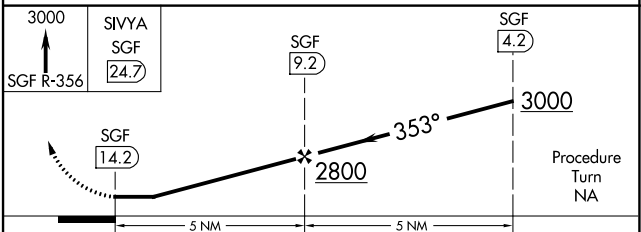
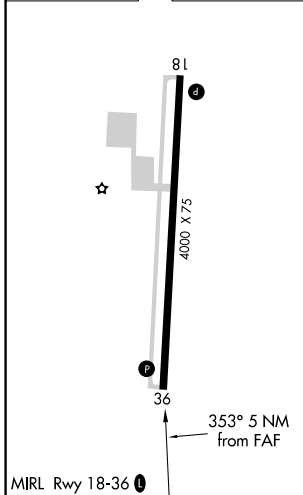
MISSED APPROACH: Climb to 3000 via SGF R-356 to SIVYA/SGF 24.7 DME and hold.

SPRINGFIELD APP CON **124.95 318.2**

UNICOM **123.0** (CTAF) **0**



ELEV 1092 TDZE 1092



CATEGORY	A	B	C	D
S-36	1700-1	608 (700-1)		NA
C CIRCLING	1700-1	608 (700-1)		NA