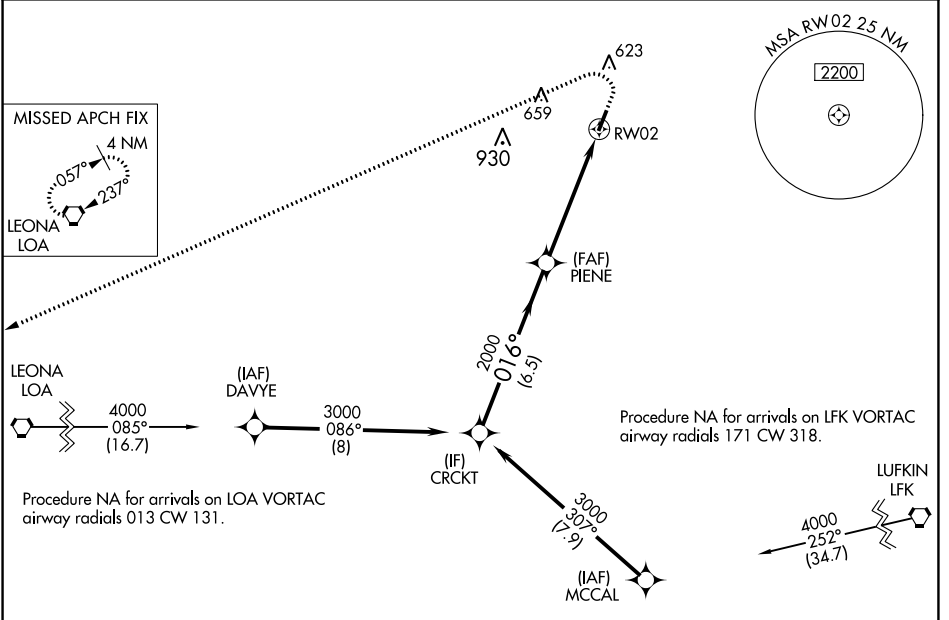


WAAS CH <b>53526</b> <b>W02A</b>	APP CRS <b>016°</b>	Rwy Idg TDZE Apt Elev	<b>4000</b> <b>341</b> <b>348</b>
--	------------------------	-----------------------------	---

# RNAV (GPS) RWY 2

HOUSTON COUNTY (DKR)

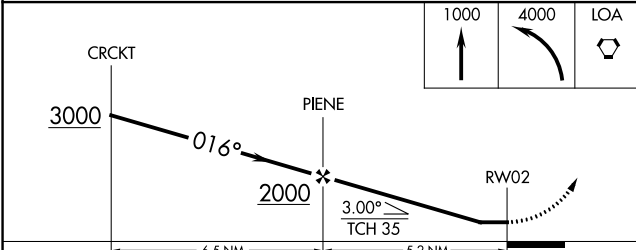
<b>⚠</b> DME/DME RNP-0.3 NA. When local altimeter setting not received, use Palestine altimeter setting and increase all MDA 100 feet. Procedure NA at night. Helicopter visibility reduction below 1 SM NA.	MISSED APPROACH: Climb to 1000 then climbing left turn to 4000 direct LOA VORTAC and hold.	
AWOS-3PT <b>118.775</b>	HOUSTON CENTER <b>134.8 269.6</b>	CTAF <b>122.9 0</b>



SC-5, 11 JUL 2024 to 08 AUG 2024

SC-5, 11 JUL 2024 to 08 AUG 2024

ELEV 348	TDZE 341
----------	----------



CATEGORY	A		B		C		D	
	LP	MDA	LP	MDA	LP	MDA	LP	MDA
LP	820-1	479 (500-1)					NA	
LNNAV MDA	840-1	499 (500-1)					NA	
CIRCLING	880-1 532 (600-1)	980-1 632 (700-1)					NA	

