

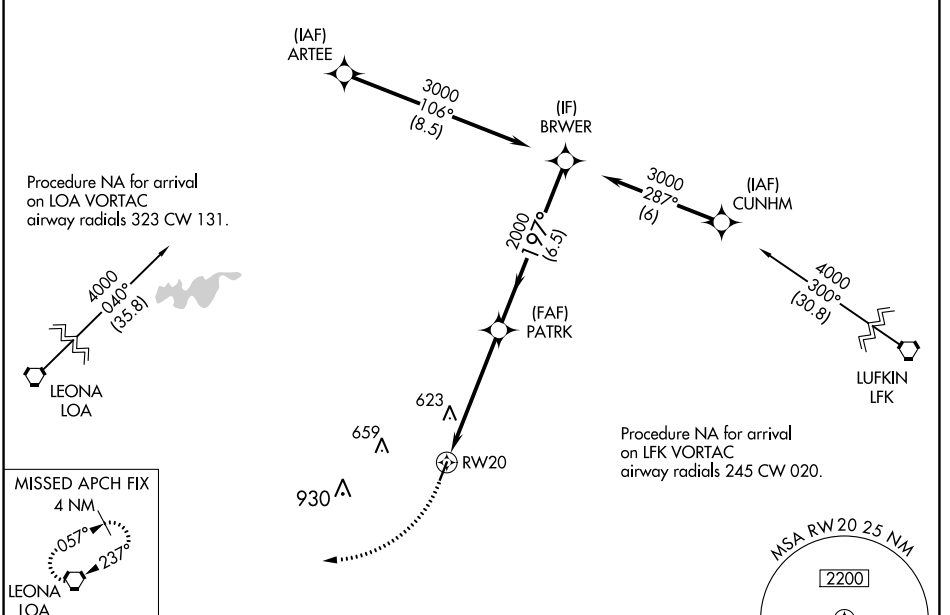
WAAS CH 65826 W20A	APP CRS 197°	Rwy Idg TDZE Apt Elev	4000 348 348
--	------------------------	-----------------------------	---

RNAV (GPS) RWY 20

HOUSTON COUNTY (DKR)

RNP APCH.	MISSED APPROACH: Climbing right turn to 4000 direct LOA VORTAC and hold.
<p>Procedure NA at night. Rwy 20 helicopter visibility reduction below 1 SM NA.</p>	

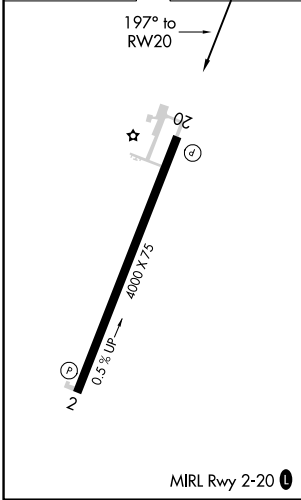
AWOS-3PT 118.775	HOUSTON CENTER 134.8 269.6	CTAF 122.9
----------------------------	--------------------------------------	----------------------



SC-5, 11 JUL 2024 to 08 AUG 2024

SC-5, 11 JUL 2024 to 08 AUG 2024

ELEV 348	TDZE 348
----------	----------



4000	LOA	Visual Segment - Obstacles.			
CATEGORY	A	B	C	D	
LP MDA	880-1	532 (600-1)	NA		
LNAV MDA	900-1	552 (600-1)	NA		
<input checked="" type="checkbox"/> CIRCLING	900-1 552 (600-1)	980-1 632 (700-1)	NA		