

WAAS CH <b>53344</b> <b>W21A</b>	APP CRS <b>213°</b>	Rwy Idg TDZE Apt Elev	<b>7001</b> <b>5758</b> <b>5823</b>
--	------------------------	-----------------------------	---

# RNAV (GPS) RWY 21

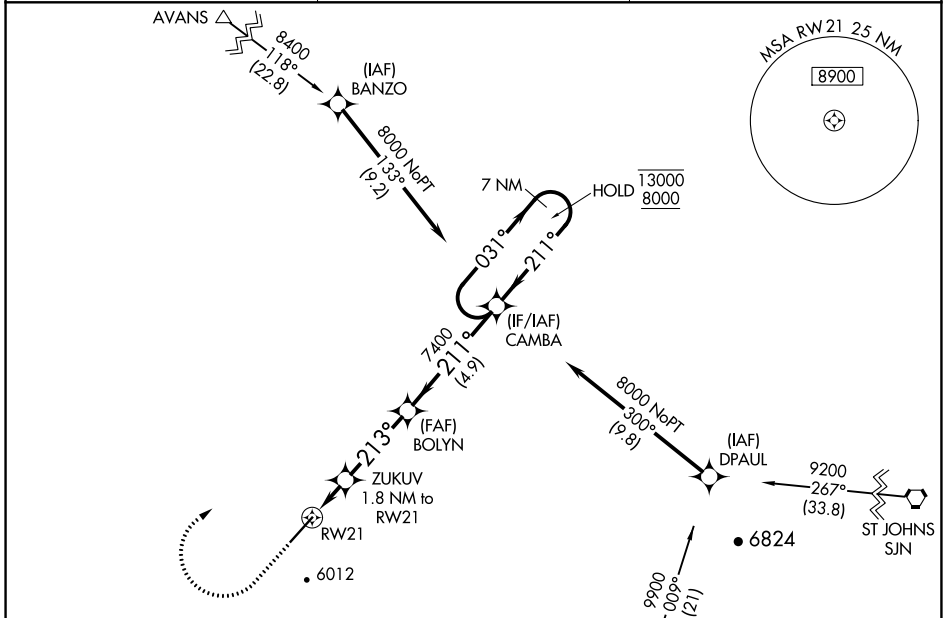
TAYLOR (TYL)

RNP APCH-GPS.

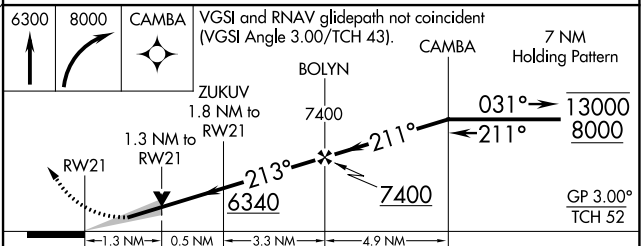
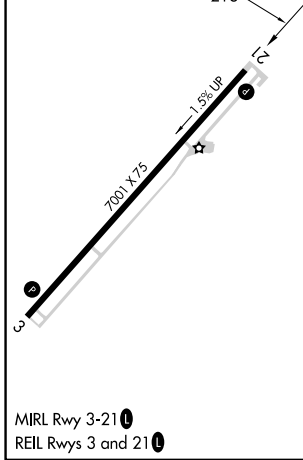
When local altimeter setting not received, procedure NA.  
For uncompensated Baro-VNAV systems, LNAV/VNAV NA below 26°C or above 54°C.

MISSED APPROACH: Climb to 6300 then climbing right turn to 8000 direct CAMBA and hold.

AWOS-3PT <b>119.075</b>	ALBUQUERQUE CENTER <b>132.9 239.05</b>	UNICOM <b>122.7 (CTAF)</b>
----------------------------	---	-------------------------------



ELEV 5823	TDZE 5758
-----------	-----------



CATEGORY	A	B	C	D
LPV DA	6008-3/4 250 (200-3/4)			
LNAV/VNAV DA	6008-3/4 250 (200-3/4)			
LNAV MDA	6180-1	422 (400-1)	6180-1 1/4	422 (400-1 1/4)
<input checked="" type="checkbox"/> CIRCLING	6320-1 497 (500-1)	6440-1 617 (700-1)	6440-1 3/4 617 (700-1 3/4)	6480-2 657 (700-2)

SW-4, 11 JUL 2024 to 08 AUG 2024

SW-4, 11 JUL 2024 to 08 AUG 2024