

# RNAV (GPS) RWY 35

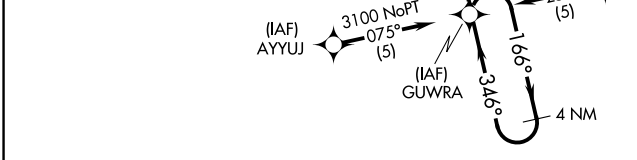
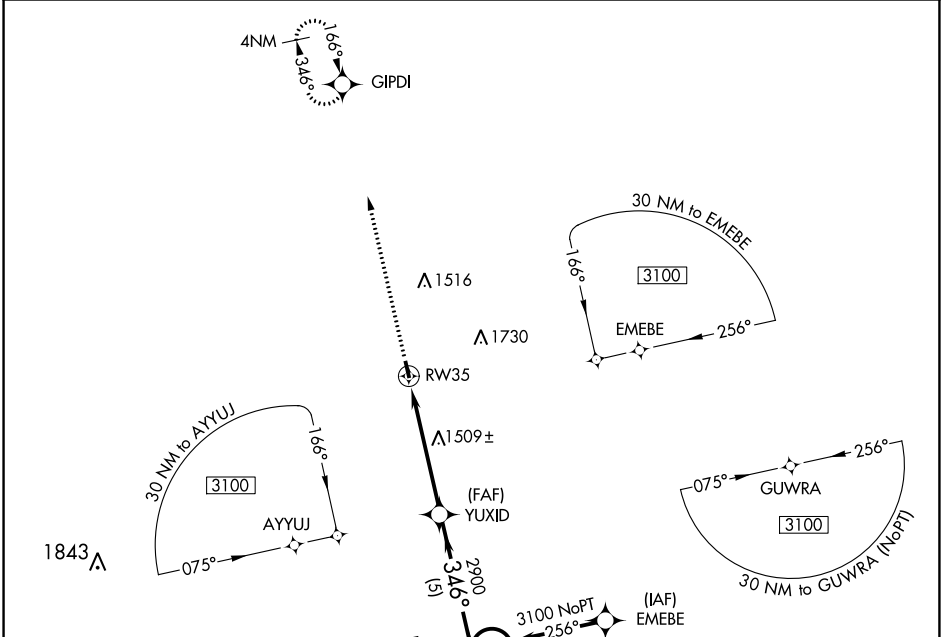
SALEM MEML (K33)

APP CRS <b>346°</b>	Rwy Idg <b>2998</b> TDZE <b>1241</b> Apt Elev <b>1241</b>
------------------------	---

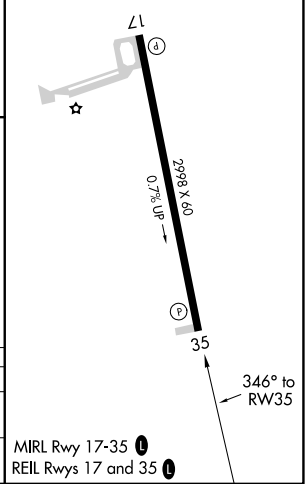
RNP APCH. MISSED APPROACH: Climb to 3000 direct GIPDI and hold.

**▼** Use Rolla Nil altimeter setting.  
**▲ NA** Rwy 35 helicopter visibility reduction below 3/4 SM NA.

KANSAS CITY CENTER <b>128.35 284.675</b>	CTAF <b>122.9</b>
---	----------------------



ELEV 1241	TDZE 1241
-----------	-----------



3000	GIPDI		
RWY 35		YUXID	G UWRA
-5.1 NM		5 NM	4 NM Holding Pattern
346°		166°	3100
3.00° TCH 40		346°	

CATEGORY	A	B	C	D
LNAV	1860-1	619 (700-1)	NA	
CIRCLING	1860-1	619 (700-1)	NA	

MIRL Rwy 17-35 **Ⓛ**  
 REIL Rws 17 and 35 **Ⓛ**

NC-3, 11 JUL 2024 to 08 AUG 2024

NC-3, 11 JUL 2024 to 08 AUG 2024