

APP CRS	Rwy Idg	5700
005°	TDZE	6757
	Apt Elev	6763

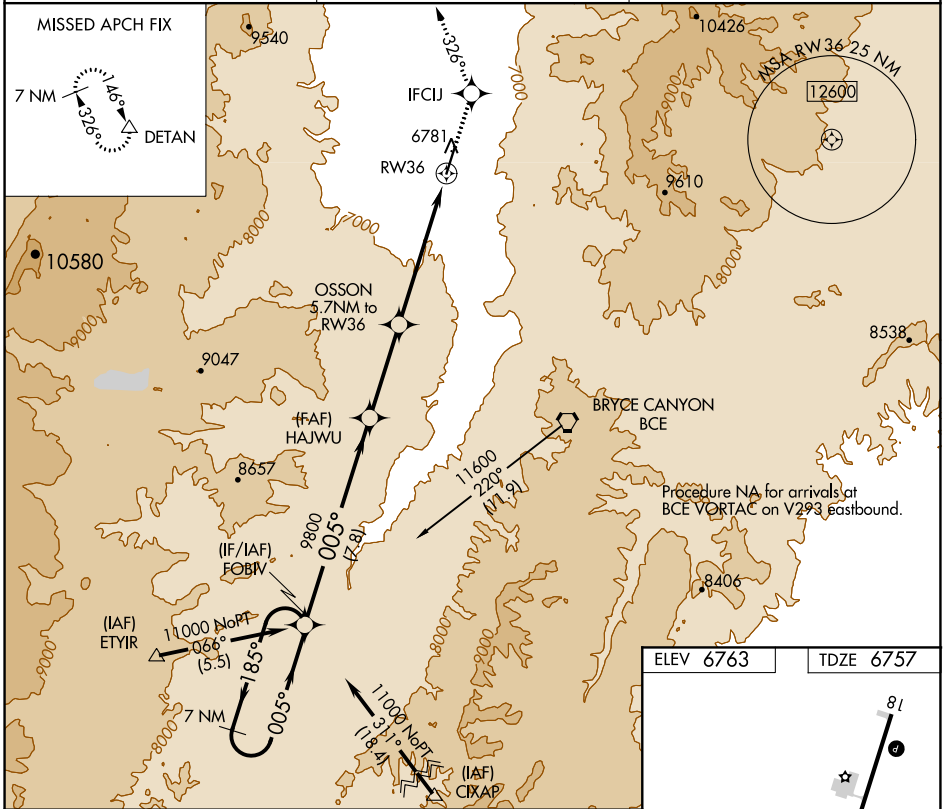
RNAV (GPS) RWY 36

PANGUITCH MUNI (U55)

⚠ DME/DME RNP-0.3 NA. When local altimeter setting not received use Bryce Canyon altimeter setting and increase all MDA 160 feet.
⚠ -28°C VDP NA with Bryce Canyon altimeter setting.

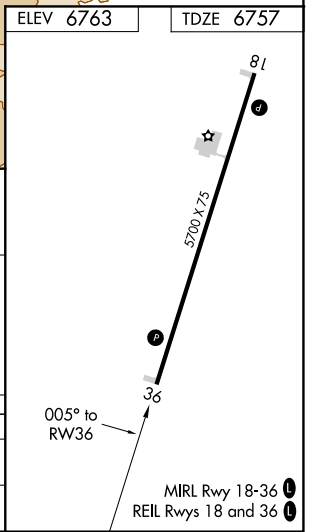
MISSED APPROACH: Climb to 12000 direct IFCUJ and on track 326° to DETAN and hold.

AWOS-3 133.125	SALT LAKE CENTER 133.6 269.25	CTAF 122.9
--------------------------	---	----------------------

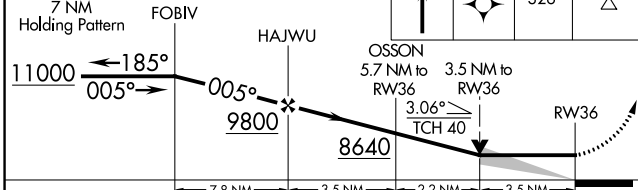


SW-4, 11 JUL 2024 to 08 AUG 2024

SW-4, 11 JUL 2024 to 08 AUG 2024



VGSI and descent angles not coincident (VGSI Angle 3.00/TCH 40).



CATEGORY	A	B	C	D
LNVA MDA	7900-1¼ 1143 (1200-1¼)	7900-1½ 1143 (1200-1½)		NA
C CIRCLING	7900-1¼ 1137 (1200-1¼)	7900-1½ 1137 (1200-1½)		NA