

PIKEVILLE, KENTUCKY

AL-9449 (FAA)

23278

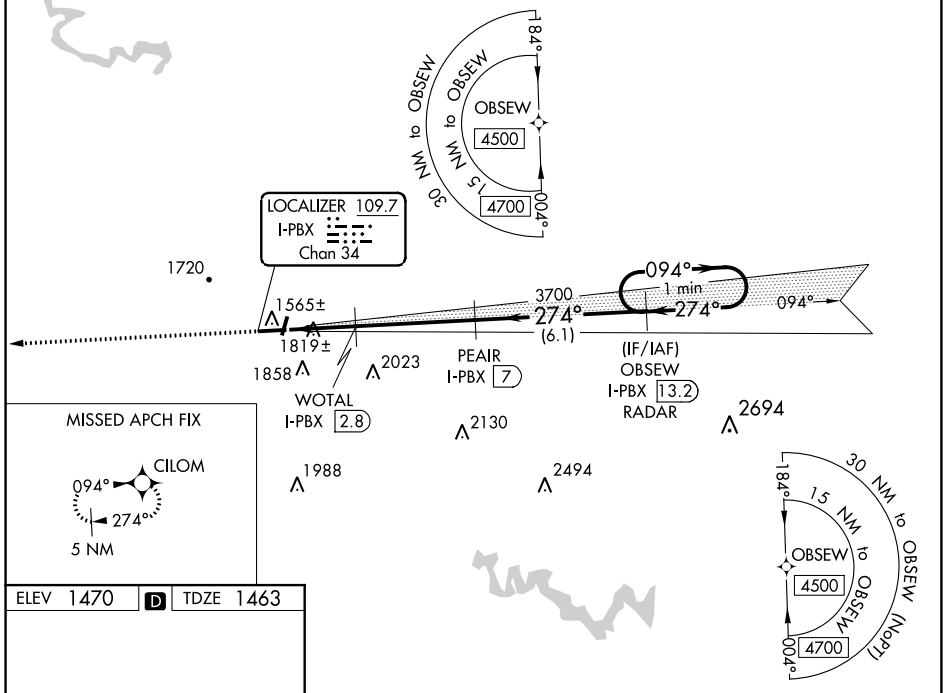
LOC/DME I-PBX 109.7 Chan 34	APP CRS 274°	Rwy Idg 4650 TDZE 1463 Apt Elev 1470
---	------------------------	---

ILS or LOC RWY 27
PIKE COUNTY/HATCHER FLD (P.BX)

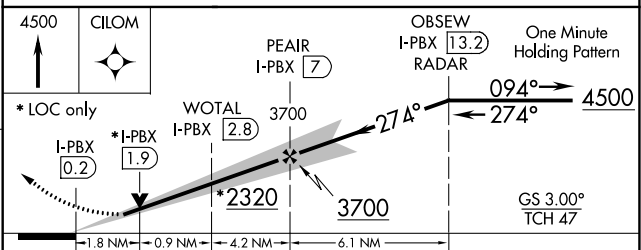
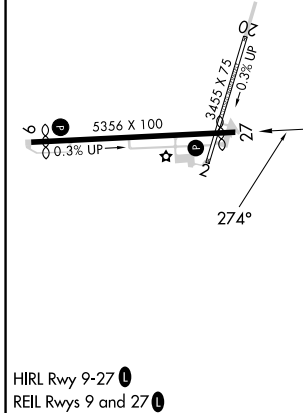
▽ △ NA	DME and RNAV 1-GPS required. Circling NA to Rwy's 2 and 20.	MISSED APPROACH: Climb to 4500 direct CILOM and hold.
-------------------------	--	--

AWOS-3PT 121.225	INDIANAPOLIS CENTER 126.575 257.85	UNICOM 122.8 (CTAF) 0
----------------------------	--	--

RNAV 1-GPS or RADAR REQUIRED



ELEV 1470	D	TDZE 1463
-----------	----------	-----------



CATEGORY	A	B	C	D
S-ILS 27	1663-1 200 (200-1)			
S-LOC 27	2080-1	617 (700-1)	2080-1¾	617 (700-1¾)
C CIRCLING	2120-1 650 (700-1)	2160-1 690 (700-1)	2160-2 690 (700-2)	2460-3 990 (1000-3)

PIKEVILLE, KENTUCKY
Amdt 2 17AUG17

37°34'N-82°34'W

PIKE COUNTY/HATCHER FLD (P.BX)
ILS or LOC RWY 27

SE-1, 11 JUL 2024 to 08 AUG 2024

SE-1, 11 JUL 2024 to 08 AUG 2024