

APP CRS <b>003°</b>	Rwy Idg TDZE Apt Elev	<b>4001</b> <b>98</b> <b>98</b>
------------------------	-----------------------------	---------------------------------------

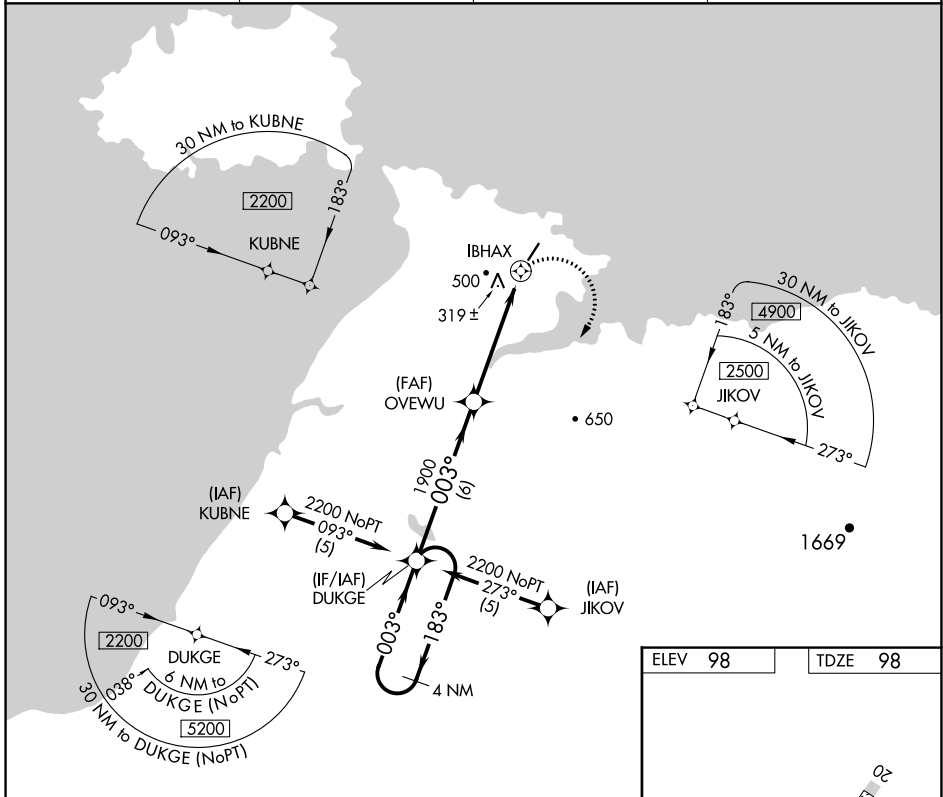
# RNAV (GPS) RWY 2

ST MICHAEL (SMK) (PAMK)

**⚠** If local altimeter setting not received, use Unalakleet altimeter setting and increase all MDAs 120 feet. Circling NA west of Rwy 2-20. DME/DME RNP-0.3 NA.  
\* VDP NA with Unalakleet altimeter setting.

**MISSED APPROACH:**  
Climbing right turn to 2200 direct DUKGE and hold.

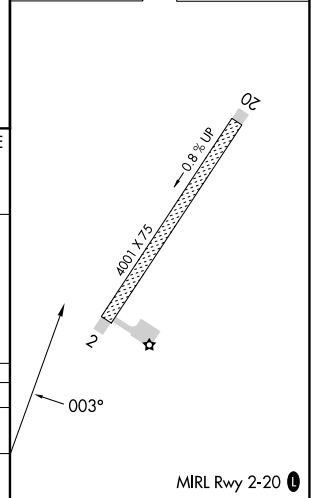
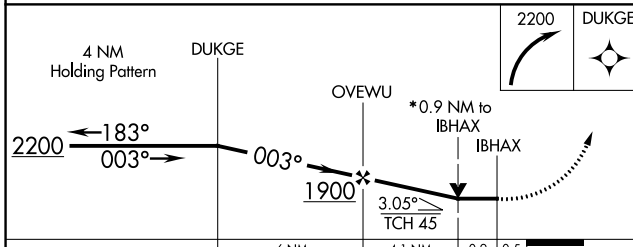
AWOS-3P <b>119.275</b>	ANCHORAGE CENTER <b>135.7</b>	NOME RADIO <b>122.3</b>	UNICOM <b>122.8</b> (CTAF) <b>0</b>
---------------------------	----------------------------------	----------------------------	--



AK, 11 JUL 2024 to 05 SEP 2024

AK, 11 JUL 2024 to 05 SEP 2024

ELEV 98	TDZE 98
---------	---------



CATEGORY	A	B	C	D
LNVA MDA	580-1	482 (500-1)	580-1½ 482 (500-1½)	580-1½ 482 (500-1½)
CIRCLING	580-1	482 (500-1)	580-1½ 482 (500-1½)	660-2 562 (600-2)