

WAAS CH <b>99630</b> <b>W09A</b>	APP CRS <b>100°</b>	Rwy Idg TDZE Apt Elev	<b>3700</b> <b>1777</b> <b>1779</b>
--	------------------------	-----------------------------	---

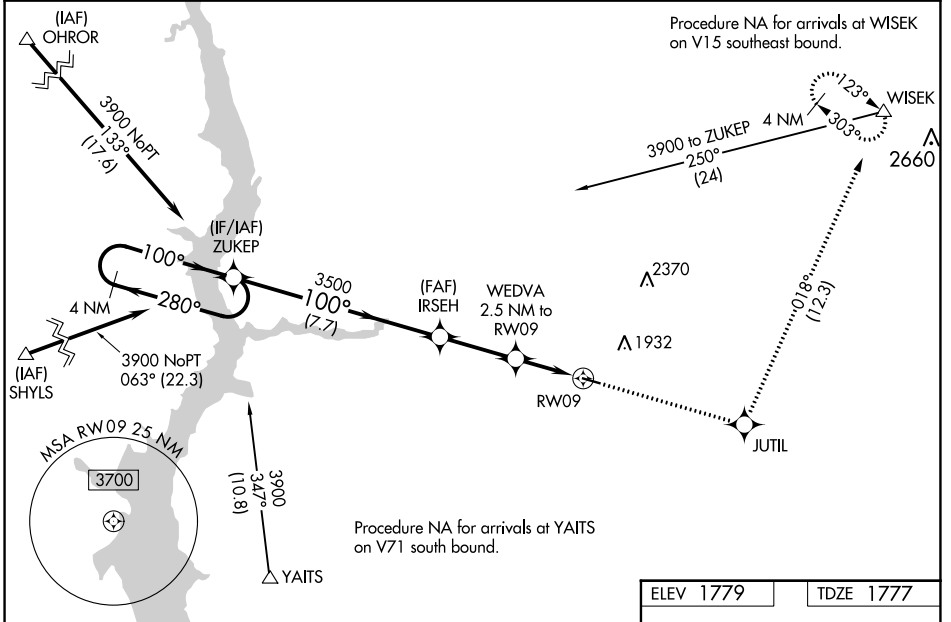
# RNAV (GPS) RWY 9

LINTON MUNI (7L2)

**▽** For uncompensated Baro-VNAV systems, LNAV/VNAV NA below -18°C (0°F) or above 54°C (130°F). DME/DME RNP-0.3 NA. When local altimeter setting not received, use Bismarck Muni altimeter setting: increase LPV DA to 2134 feet and all visibilities ¼ SM; increase LNAV/VNAV DA to 2198 and all visibilities ½ SM; increase all MDAs 120 feet and visibility LNAV Cat C ¼ SM and Circling Cat C ½ SM. Baro-VNAV and VDP NA when using Bismarck Muni altimeter setting.

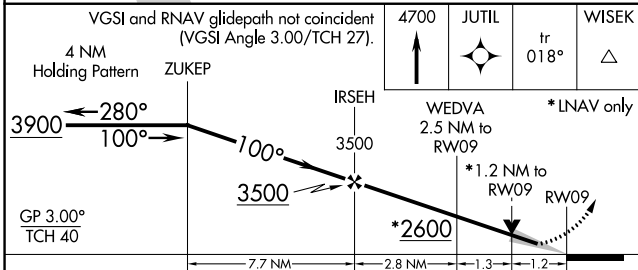
**▲** MISSED APPROACH: Climb to 4700 direct JUTIL and on track 018° to WISEK and hold.

ASOS-3 <b>118.175</b>	MINNEAPOLIS CENTER <b>135.25 256.7</b>	CTAF <b>122.9</b>
--------------------------	---	----------------------



NC-1, 11 JUL 2024 to 08 AUG 2024

NC-1, 11 JUL 2024 to 08 AUG 2024



ELEV 1779	TDZE 1777										
<table border="1"> <tr> <td>VGSi and RNAV glidepath not coincident (VGSi Angle 3.00/TCH 27).</td> <td>4700</td> <td>JUTIL</td> <td>tr 018°</td> <td>WISEK</td> </tr> <tr> <td>4 NM Holding Pattern</td> <td></td> <td></td> <td></td> <td></td> </tr> </table>		VGSi and RNAV glidepath not coincident (VGSi Angle 3.00/TCH 27).	4700	JUTIL	tr 018°	WISEK	4 NM Holding Pattern				
VGSi and RNAV glidepath not coincident (VGSi Angle 3.00/TCH 27).	4700	JUTIL	tr 018°	WISEK							
4 NM Holding Pattern											
GP 3.00° TCH 40	7.7 NM	2.8 NM	1.3	1.2							
CATEGORY	A	B	C	D							
LPV DA	2027-1	250 (300-1)		NA							
LNAV/VNAV DA	2091-1	314 (400-1)		NA							
LNAV MDA	2160-1	383 (400-1)	2160-1½ 383 (400-1½)	NA							
CIRCLING	2220-1 441 (500-1)	2360-1 581 (600-1)	2440-1¾ 661 (700-1¾)	NA							