

APP CRS <b>273°</b>	Rwy Idg <b>3300</b>
	TDZE <b>274</b>
	Apt Elev <b>274</b>

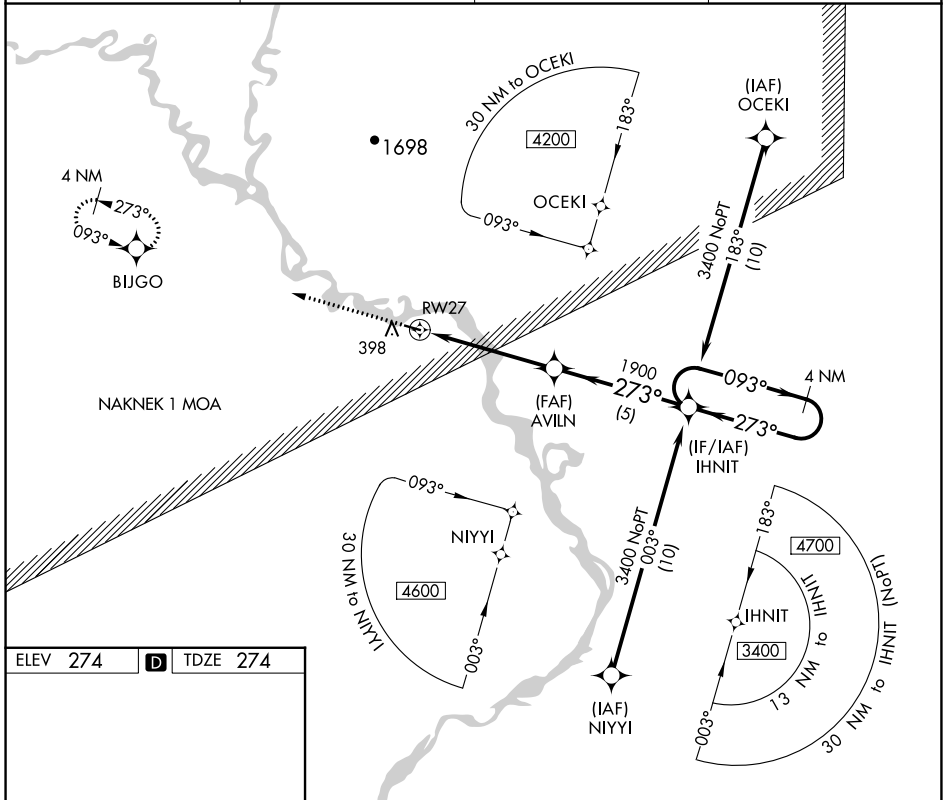
# RNAV (GPS) RWY 27

KOLIGANEK (JZZ) (P.AJZ)

**⚠** When local altimeter setting not received, use New Stuyahok altimeter setting and increase all MDAs 60 feet. DME/DME RNP-0.3 NA.  
**⚠** Helicopter visibility reduction below 1 SM NA. Procedure NA at night.

MISSED APPROACH: Climb to 2900 direct BIJGO and hold.

AWOS-3P <b>118.525</b>	ANCHORAGE CENTER <b>132.75 282.35</b>	DILLINGHAM RADIO <b>122.55</b>	CTAF <b>122.9</b>
---------------------------	--	-----------------------------------	----------------------



AK, 11 JUL 2024 to 05 SEP 2024

AK, 11 JUL 2024 to 05 SEP 2024

ELEV 274 **D** TDZE 274

MIRL Rwy 9-27 **Ⓛ**

2900	BIJGO	Visual Segment - Obstacles.	
↑	✧	AVILN	IHNIT 4 NM Holding Pattern
RWY 27		1900	3400
5 NM		5 NM	093° → 273° ←
CATEGORY	A	B	C D
LNAV MDA	780-1	506 (600-1)	NA
<b>C</b> CIRCLING	780-1	506 (600-1)	NA