

STIGLER, OKLAHOMA

AL-9467 (FAA)

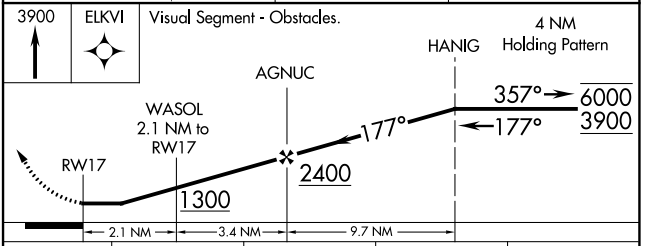
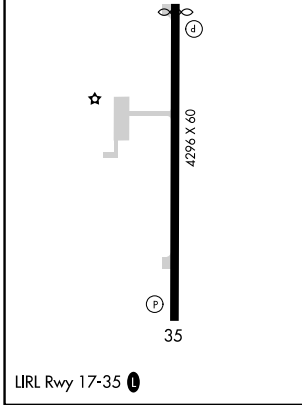
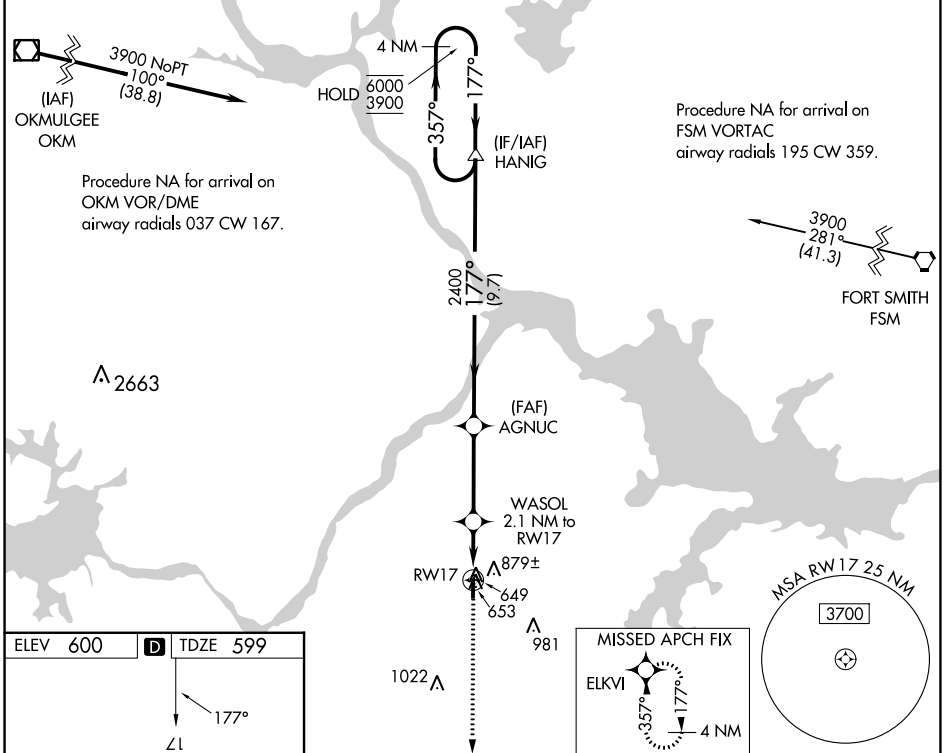
23166

WAAS CH <b>65822</b> <b>W17A</b>	APP CRS <b>177°</b>	Rwy Idg TDZE <b>599</b> Apt Elev <b>600</b>	<b>4200</b>
--	------------------------	---	-------------

# RNAV (GPS) RWY 17

STIGLER RGNL (GZL)

RNP APCH. ▼ Rwy 17 helicopter visibility reduction below 1 SM NA. Procedure NA at night.		MISSED APPROACH: Climb to 3900 direct ELKVI and hold, continue climb-in-hold to 3900.	
AWOS-3PT <b>118.575</b>	FORT WORTH CENTER <b>132.2 338.35</b>	CTAF <b>122.90</b>	



CATEGORY	A	B	C	D
LP MDA	900-1	301 (300-1)		NA
LNAV MDA	1020-1	421 (500-1)		NA
<b>C</b> CIRCLING	1180-1	580 (600-1)		NA

STIGLER, OKLAHOMA  
Orig-B 03JAN19

35°17'N-95°06'W

# RNAV (GPS) RWY 17

SC-1, 11 JUL 2024 to 08 AUG 2024

SC-1, 11 JUL 2024 to 08 AUG 2024