

APP CRS **127°**
 Rwy Idg **5600**
 TDZE **84**
 Apt Elev **92**

RNAV (GPS) RWY 12

EGEGIK (EII) (PAII)

RNP APCH.

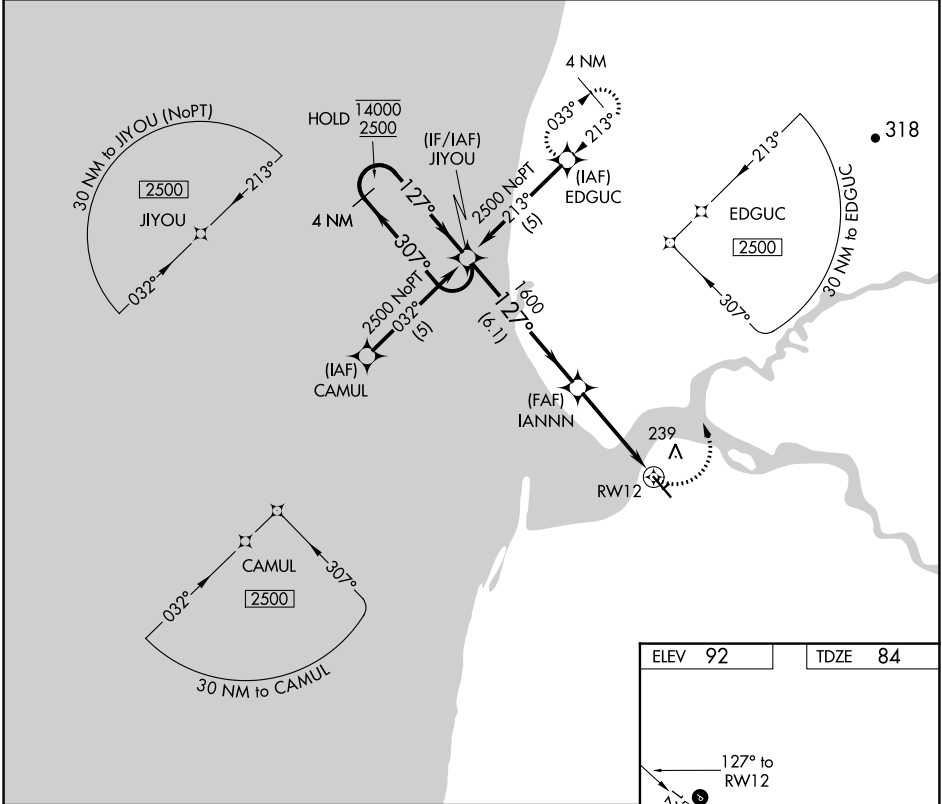
MISSED APPROACH: Climbing left turn to 2500 direct EDGUC and hold.

▼ Rwy 12 helicopter visibility reduction below 1 SM NA.

AWOS-3P
135.65

ANCHORAGE CENTER
124.8 354.0

CTAF
122.8 0



AK, 11 JUL 2024 to 05 SEP 2024

AK, 11 JUL 2024 to 05 SEP 2024

ELEV 92	TDZE 84
---------	---------

127° to RWY 12
 5600 A 100
 1500 A 75

4 NM Holding Pattern	VGSI and descent angles not coincident (VGSI Angle 3.00/TCH 35).	2500 EDGUC
----------------------	--	------------

14000 2500
 307° 127°
 JIYOU IANNN RWY 12
 1600
 3.34° TCH 35
 6.1 NM 4.2 NM

CATEGORY	A	B	C	D
LNVA MDA	600-1	516 (600-1)	600-1 ³ / ₄ 516 (600-1 ³ / ₄)	NA
CIRCLING	800-1	708 (800-1)	800-2 ¹ / ₄ 708 (800-2 ¹ / ₄)	NA

REIL Rwy 12 0
 MIRL Rwy 3-21 and 12-30 0