

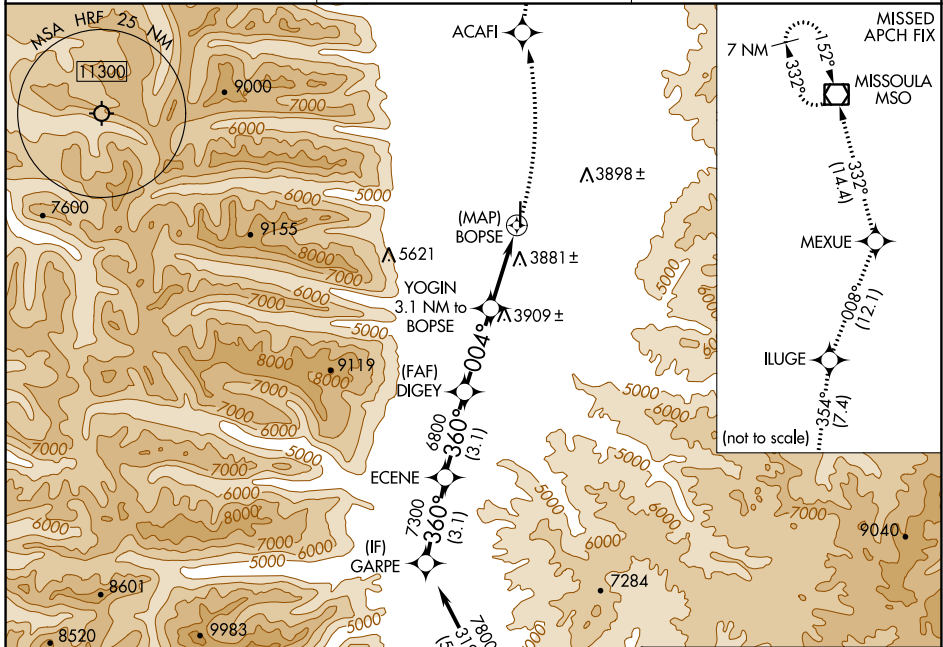
APP CRS	Rwy Idg	N/A
004°	TDZE	N/A
	Apt Elev	3636

RNAV (GPS)-A

RAVALLI COUNTY (HRF)

RNP APCH-GPS.	MISSED APPROACH: Climbing left turn to 11200 direct ACAFI and on track 354° to ILUGE and track 008° to MEXUE and track 332° to MISSOULA VOR/DME and hold.
Circling to Rwy 35 NA at night. Rwy 35 helicopter visibility reduction below 1 SM NA.	

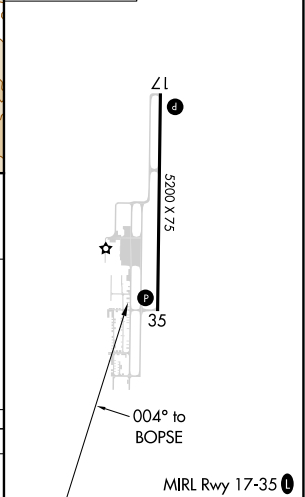
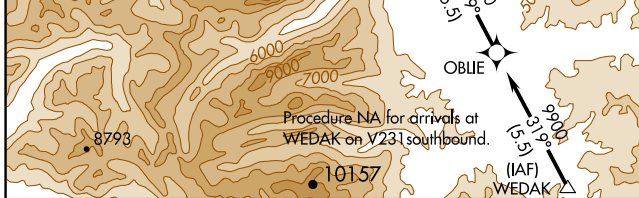
AWOS-3P 119.825	SALT LAKE CENTER 132.4 338.3	UNICOM 122.8 (CTAF)
---------------------------	--	-------------------------------



NW-1, 11 JUL 2024 to 08 AUG 2024

NW-1, 11 JUL 2024 to 08 AUG 2024

ELEV 3636



	11200	ACAFI	ILUGE	MEXUE	MSO
			tr 354°		tr 332°
CATEGORY	A	B	C	D	
CIRCLING	4240-1 604 (700-1)	4260-1 624 (700-1)	NA		