

APP CRS 009°	Rwy Idg TDZE Apt Elev	N/A N/A 4044
------------------------	-----------------------------	---

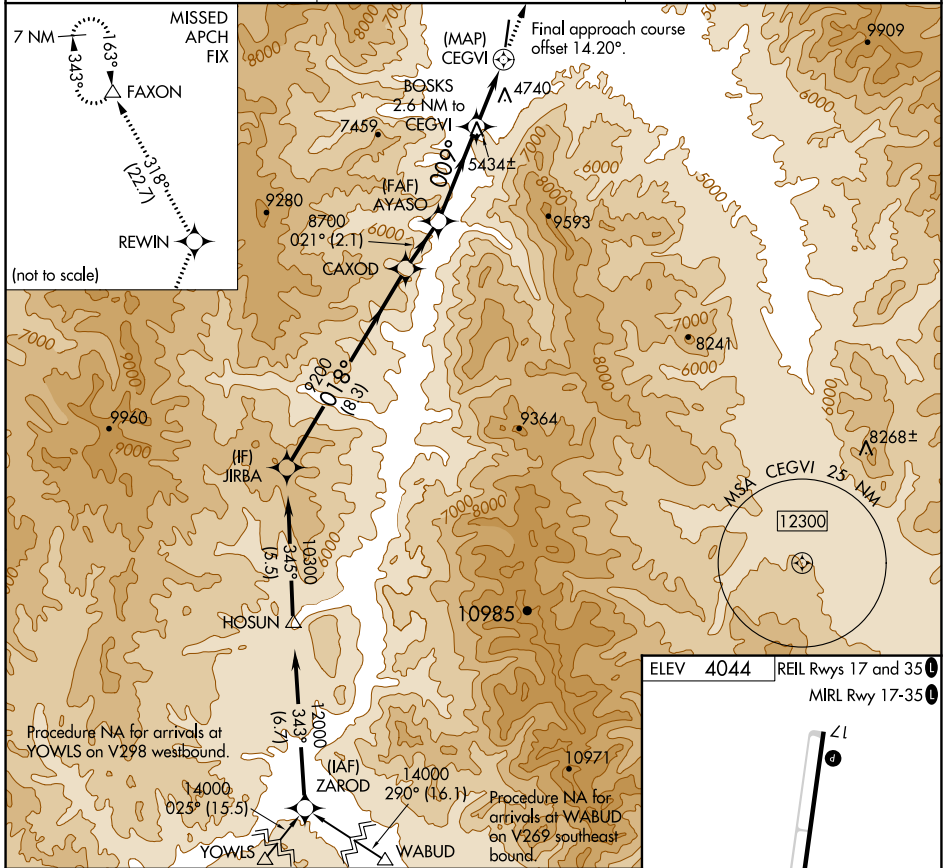
RNAV (GPS)-D

LEMHI COUNTY (SMN)

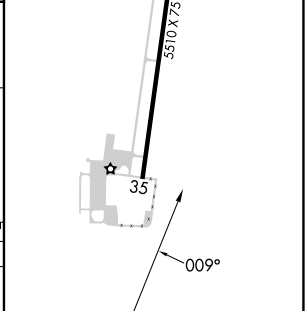
⚠ Circling Rwy 35 NA at night.
⚠ NA DME/DME RNP-0.3 NA.
⚠ -13°C Circling NA for Cat C east of Rwy 17-35.

MISSED APPROACH: Climb to 12000 direct REWIN and on track 318° to FAXON and hold, continue climb-in-hold to 12000.

AWOS-3PT 135.075	SALT LAKE CENTER 132.4 338.3	UNICOM 122.8 (CTAF) 0
----------------------------	--	---------------------------------



JIRBA	CAXOD	AYASO	BOSKS	REWIN	FAXON
10300	9200	8700	7020	tr 318°	△
018°		021°		009°	
8.3 NM		2.1 NM		3.6 NM	
				2.6 NM	
				0.5	
CATEGORY	A	B	C	D	
C CIRCLING	6000-1¼ 1956 (2000-1¼)	6000-1½ 1956 (2000-1½)	6220-3 2176 (2200-3)	NA	



NW-1, 11 JUL 2024 to 08 AUG 2024

NW-1, 11 JUL 2024 to 08 AUG 2024