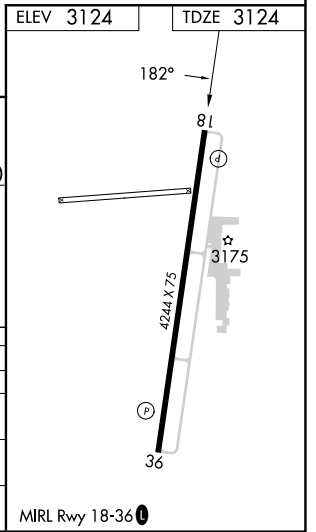
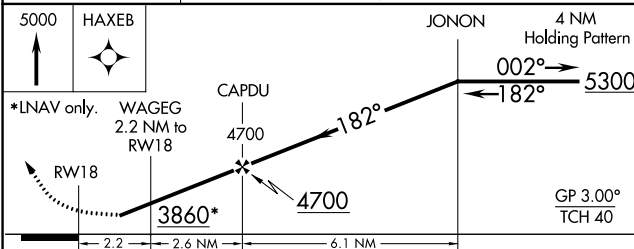
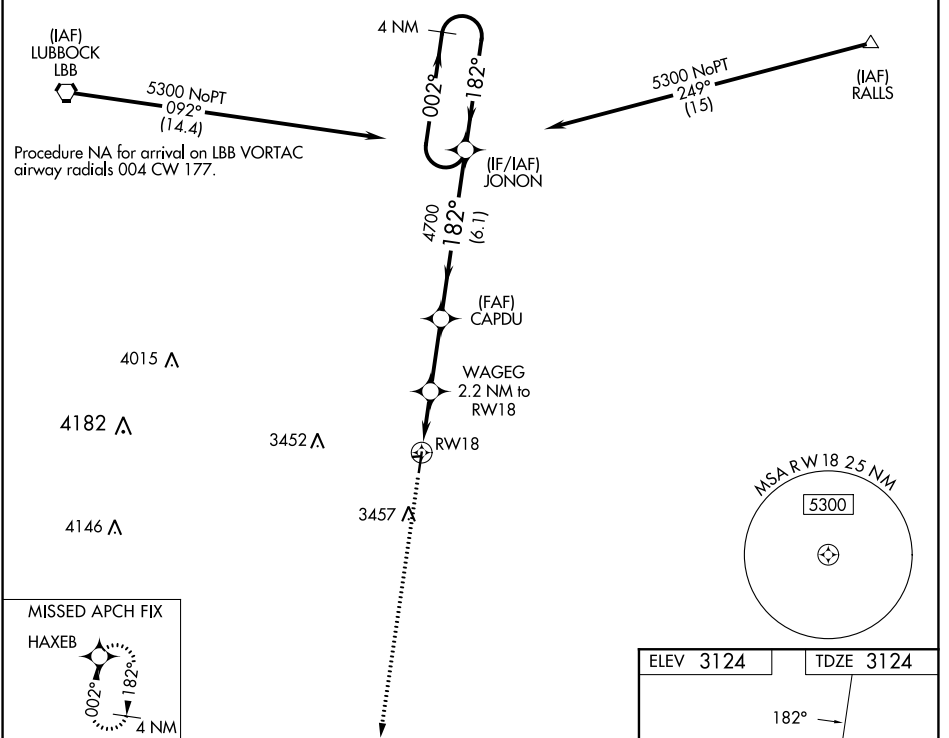


WAAS CH 42739 W18A	APP CRS 182°	Rwy Idg TDZE Apt Elev	4244 3124 3124
--	------------------------	-----------------------------	---

RNAV (GPS) RWY 18

CITY OF SLATON/LARRY T NEAL MEML (F49)

V Baro-VNAV NA. DME/DME RNP-0.3 NA. Rwy 18 helicopter visibility reduction	MISSED APPROACH: Climb to 5000 direct HAXEB and hold.	
NA		
LBB ASOS 125.3 270.275	LUBBOCK APP CON 119.2 351.8	UNICOM 123.0 (CTAF) 0



CATEGORY	A	B	C	D
LPV DA		3427-1	303 (400-1)	
LNAV/VNAV DA		3427-1	303 (400-1)	
LNAV MDA		3480-1	356 (400-1)	
C CIRCLING	3680-1 556 (600-1)	3820-1 696 (700-1)	3820-2 696 (700-2)	3820-2¼ 696 (700-2¼)

SC-2, 11 JUL 2024 to 08 AUG 2024

SC-2, 11 JUL 2024 to 08 AUG 2024

MIRL Rwy 18-36 **0**