

WAAS CH 63132 W07A	APP CRS 074°	Rwy Idg TDZE Apt Elev	4005 102 103
--	------------------------	-----------------------------	---

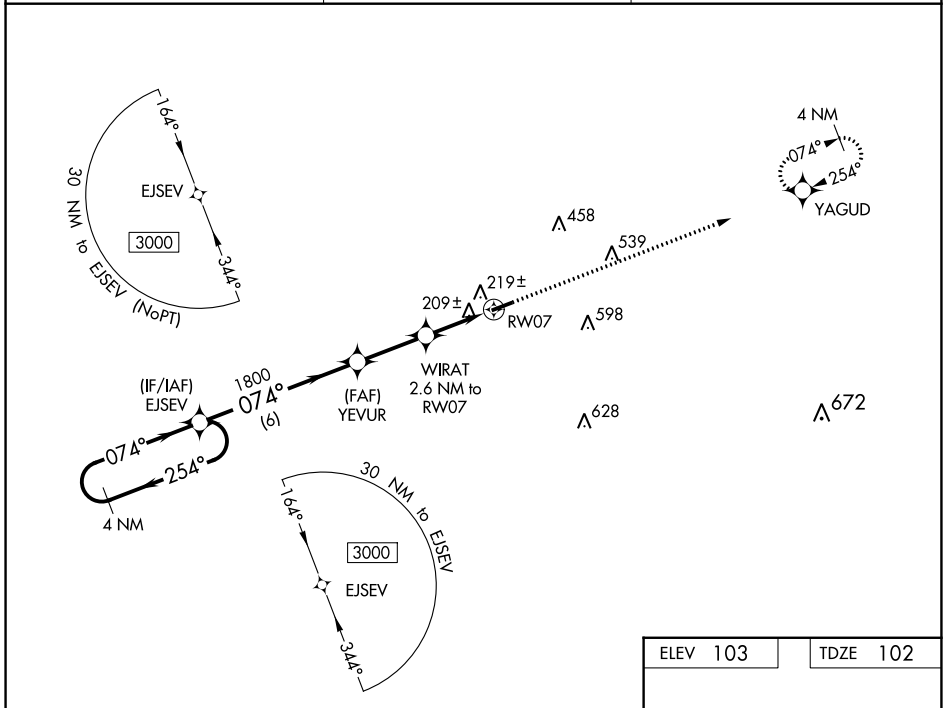
RNAV (GPS) RWY 7

SUWANNEE COUNTY (24J)

▽ When local altimeter setting not received, use Perry altimeter setting and increase all MDAs 100 feet. DME/DME RNP-0.3 NA.
△ NA Helicopter visibility reduction below 1 SM NA.
 Procedure NA at night.

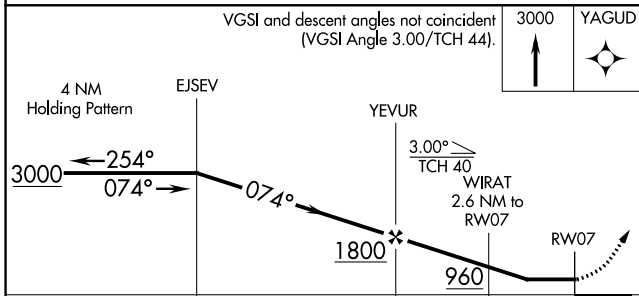
MISSED APPROACH: Climb to 3000 direct YAGUD and hold.

AWOS-3 118.225	JACKSONVILLE CENTER 125.375 254.325	UNICOM 122.8 (CTAF) 0
--------------------------	---	---------------------------------



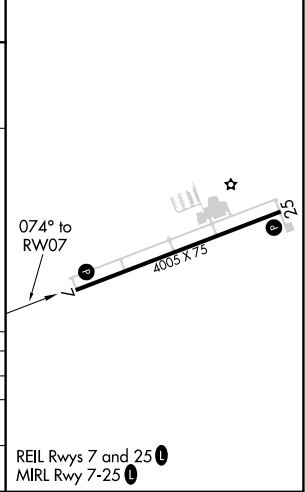
SE-3, 11 JUL 2024 to 08 AUG 2024

SE-3, 11 JUL 2024 to 08 AUG 2024



ELEV 103	TDZE 102
----------	----------

CATEGORY	A	B	C	D
LP MDA	460-1	358 (400-1)		NA
LNAV MDA	480-1	378 (400-1)		NA
C CIRCLING	560-1 457 (500-1)	600-1 497 (500-1)		NA



REIL Rwy 7 and 25 **0**
MIRL Rwy 7-25 **0**