

APP CRS	Rwy Idg	<b>3603</b>
<b>231°</b>	TDZE	<b>231</b>
	Apt Elev	<b>231</b>

# RNAV (GPS) RWY 23

BAMBERG COUNTY (99N)

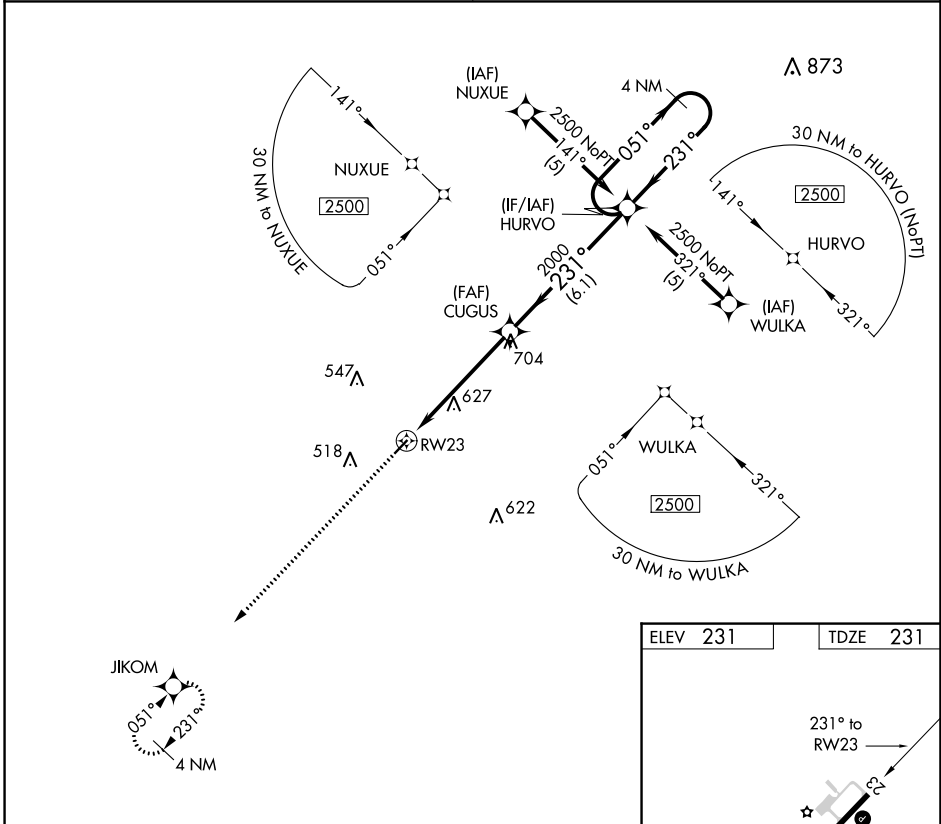
RNP APCH.

**∇** Procedure NA at night.  
**Δ** NA Rwy 23 helicopter visibility reduction below 1 SM NA.  
 Use Orangeburg Muni altimeter setting, when not received, procedure NA.

MISSED APPROACH: Climb to 2500 direct JIKOM and hold.

COLUMBIA APP CON  
**124.15 338.2**

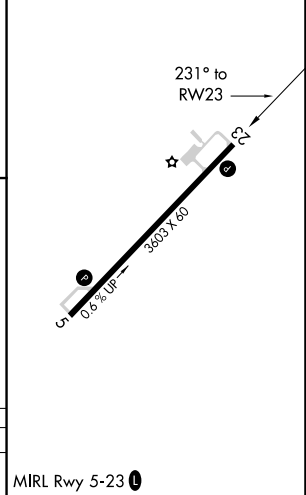
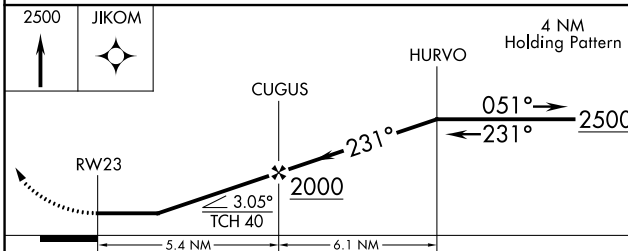
UNICOM  
**122.8 (CTAF) 0**



SE-2, 11 JUL 2024 to 08 AUG 2024

SE-2, 11 JUL 2024 to 08 AUG 2024

ELEV 231	TDZE 231
----------	----------



CATEGORY	A	B	C	D
LNAV MDA	920-1	689 (700-1)	NA	

MIRL Rwy 5-23 0