

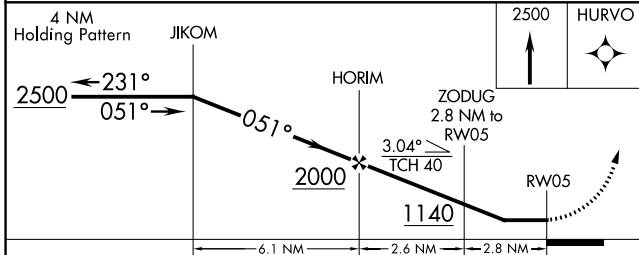
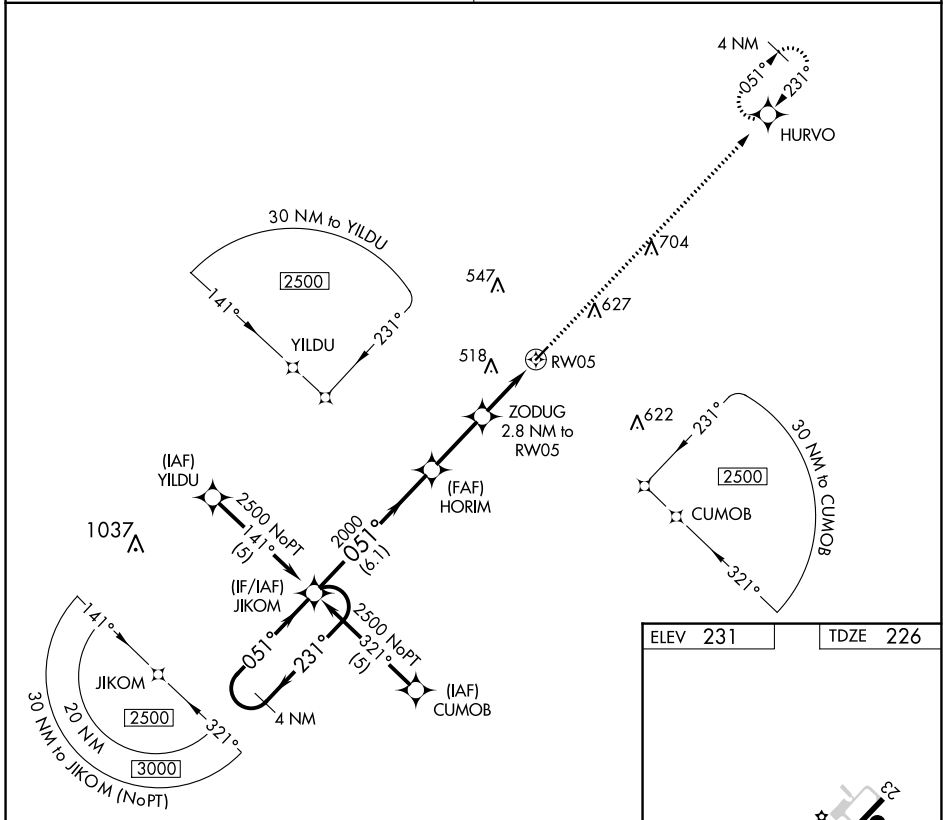
APP CRS	Rwy Idg	<b>3603</b>
<b>051°</b>	TDZE	<b>226</b>
	Apt Elev	<b>231</b>

# RNAV (GPS) RWY 5

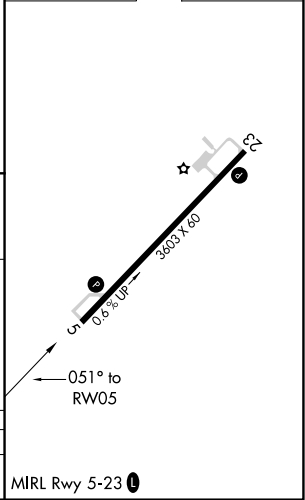
BAMBERG COUNTY (99N)

RNP APCH.	<p>Procedure NA at night.</p> <p>NA Rwy 5 helicopter visibility reduction below 1 SM NA.</p> <p>Use Orangeburg Muni altimeter setting; when not received, procedure NA.</p>	MISSED APPROACH: Climb to 2500 direct HURVO and hold.
-----------	---	---

COLUMBIA APP CON <b>124.15 338.2</b>	UNICOM <b>122.8 (CTAF) 0</b>
---	---------------------------------



ELEV 231	TDZE 226
----------	----------



CATEGORY	A	B	C	D
LNAV MDA	740-1	514 (600-1)	NA	NA

SE-2, 11 JUL 2024 to 08 AUG 2024

SE-2, 11 JUL 2024 to 08 AUG 2024