

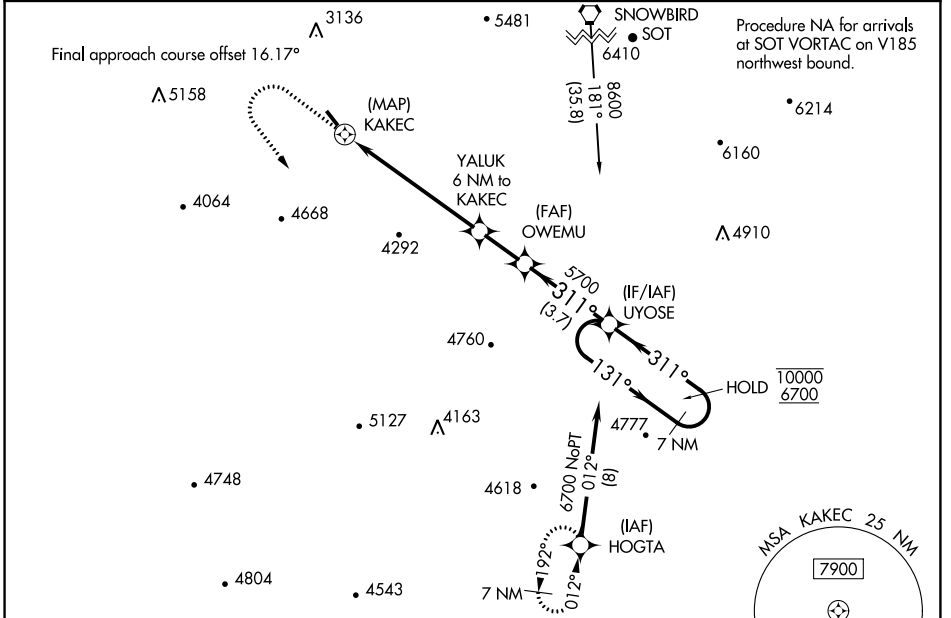
APP CRS	Rwy Idg	3060
311°	TDZE	2807
	Apt Elev	2857

RNAV (GPS) RWY 33

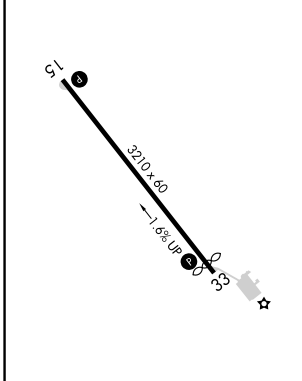
JACKSON COUNTY (24A)

RNP APCH.	MISSED APPROACH: Climb to 5000 then climbing left turn to 8000 direct HOGTA and hold.
▼ Procedure NA at night. ▲ Rwy 33 helicopter visibility reduction below 1 SM NA. ☄ -14°C	

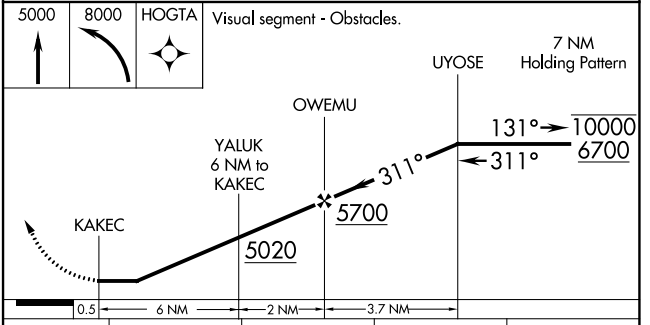
AWOS-3PT 118.9	ATLANTA CENTER 134.8 379.95	UNICOM 123.0 (CTAF) 0
--------------------------	---------------------------------------	---------------------------------



ELEV 2857	TDZE 2807
-----------	-----------



5000	8000	HOGTA	Visual segment - Obstacles.
↑	↪	☄	



CATEGORY	A	B	C	D
LNAV MDA	4360-1¼ 1553 (1600-1¼)	4360-1½ 1553 (1600-1½)	NA	
☑ CIRCLING	4360-1¼ 1503 (1600-1¼)	4520-1½ 1663 (1700-1½)	NA	

SE-2, 11 JUL 2024 to 08 AUG 2024

SE-2, 11 JUL 2024 to 08 AUG 2024