

WAAS CH 53622 W23A	APP CRS 232°	Rwy ldg 4000 TDZE 441 Apt Elev 441
--	------------------------	---

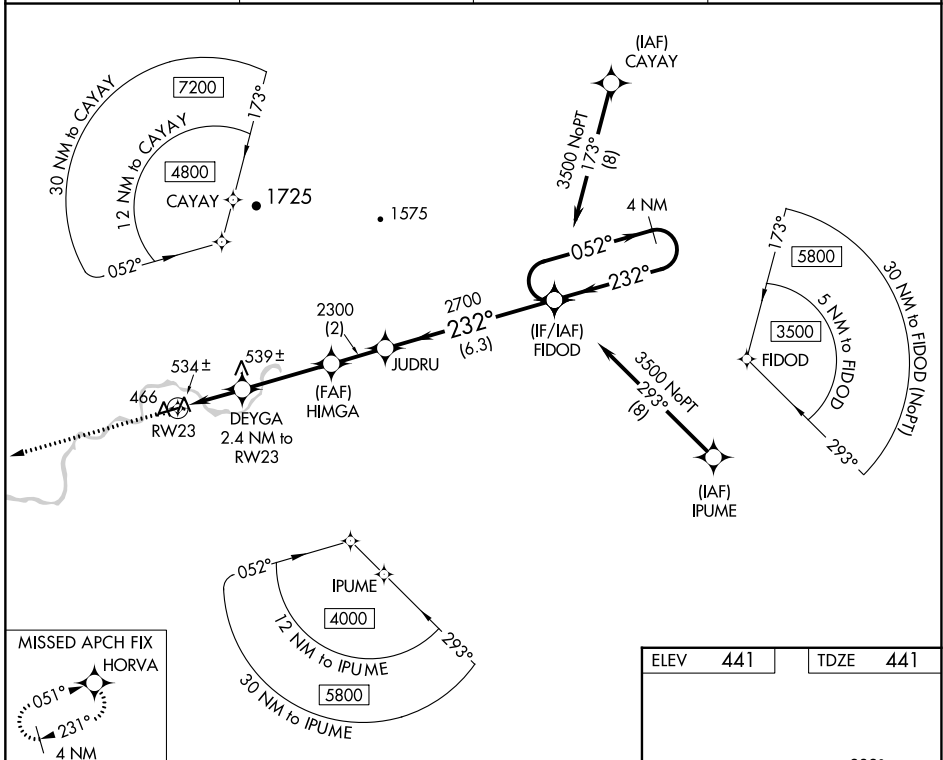
RNAV (GPS) RWY 23

ALLAKAKET (6A8) (PFAL)

NA
DME/DME RNP-0.3 NA. Visibility reduction by helicopter below $\frac{3}{4}$ SM NA. Use Betles altimeter setting.

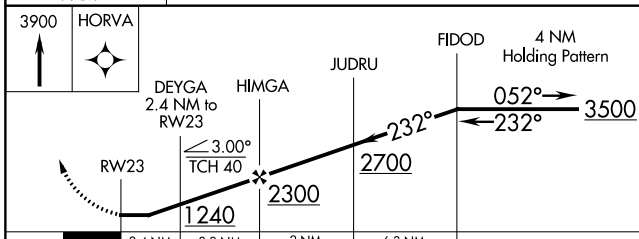
MISSED APPROACH: Climb to 3900 direct HORVA and hold, continue climb-in-hold to 3900.

BTT/PABT ASOS 135.45	ANCHORAGE CENTER 124.6 352.0	FAIRBANKS RADIO 122.2	CTAF 122.9
--------------------------------	--	---------------------------------	----------------------

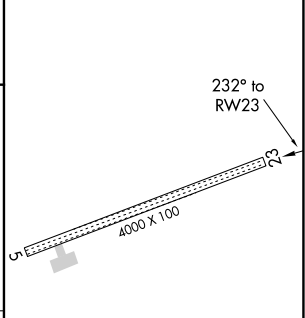


AK, 11 JUL 2024 to 05 SEP 2024

AK, 11 JUL 2024 to 05 SEP 2024



ELEV 441	TDZE 441
-----------------	-----------------



CATEGORY	A	B	C	D
LP MDA	900-1	459 (500-1)	900-1 $\frac{3}{8}$ 459 (500-1 $\frac{3}{8}$)	NA
LNAV MDA	900-1	459 (500-1)	900-1 $\frac{3}{8}$ 459 (500-1 $\frac{3}{8}$)	NA
CIRCLING	1100-1 659 (700-1)	1220-1 779 (800-1)	1240-2 $\frac{1}{4}$ 799 (800-2 $\frac{1}{4}$)	NA

MIRL Rwy 5-23