

WAAS CH <b>93540</b> <b>W17A</b>	APP CRS <b>191°</b>	Rwy Idg TDZE <b>136</b> Apt Elev <b>138</b>	<b>4000</b>
--	------------------------	---	-------------

# RNAV (GPS) RWY 17

GRAYLING (KGX)(PAGX)

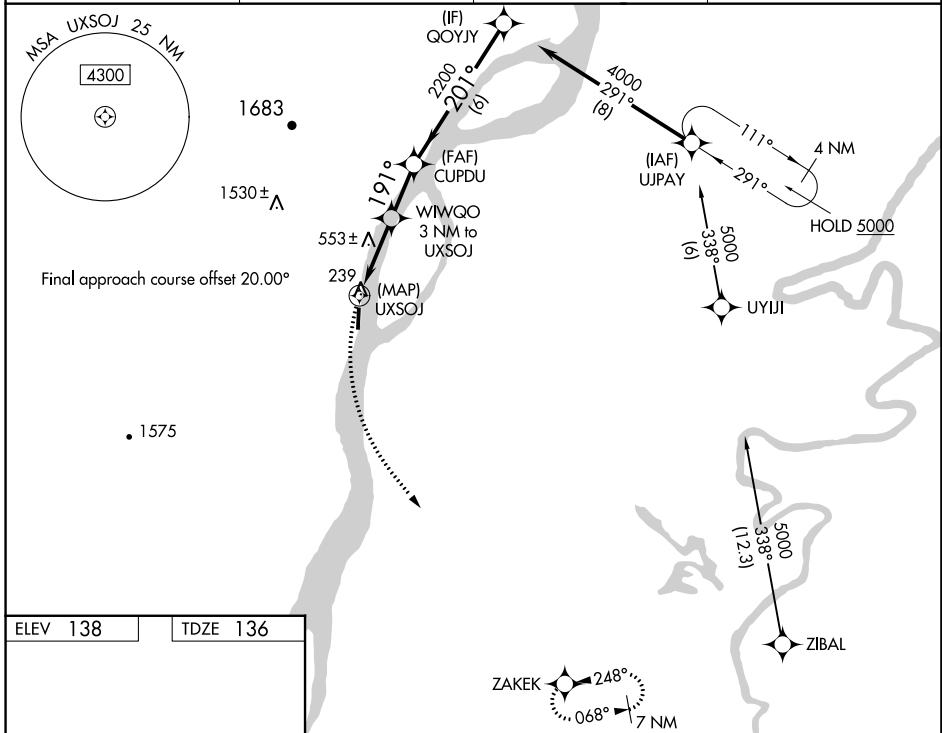
**RADAR** required for procedure entry.

**NA** Circling NA west of Rwy 17-35. Rwy 17 helicopter visibility reduction below ¼ SM NA. DME/DME RNP-0.3 NA. Use Shageluk altimeter setting; when not received, use Anvik altimeter setting.

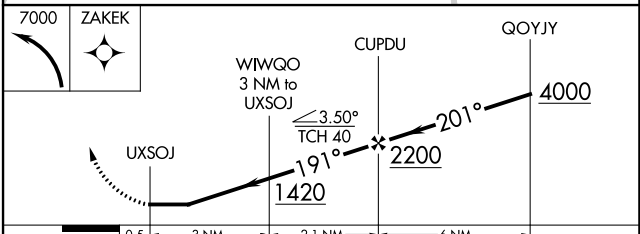
**-24°C**

**MISSED APPROACH:** Climbing left turn to 7000 direct ZAKEK and hold, continue climb-in-hold to 7000.

SHX/PAHX AWOS-3P <b>121.575</b>	ANCHORAGE CENTER <b>118.15 251.05</b>	KENAI RADIO <b>122.4</b>	CTAF <b>122.9</b>
------------------------------------	--	-----------------------------	----------------------



ELEV 138	TDZE 136
MIRL Rwy 17-35	



	0.5	3 NM	2.1 NM	6 NM	
CATEGORY	A	B	C	D	
LP MDA	860-1	724 (800-1)	1360-2½	1224 (1300-2½)	
LNAV MDA	1360-1¼ 1224 (1300-1¼)	1360-1½ 1224 (1300-1½)	1360-3	1224 (1300-3)	
<b>CIRCLING</b>	1360-1¼ 1222 (1300-1¼)	1360-1½ 1222 (1300-1½)	1360-3 1222 (1300-3)	1420-3 1282 (1300-3)	

AK, 11 JUL 2024 to 05 SEP 2024

AK, 11 JUL 2024 to 05 SEP 2024