

WAAS CH 49203 W26A	APP CRS 256°	Rwy Idg 4651 TDZE 4896 Apt Elev 4900
---------------------------------	------------------------	---

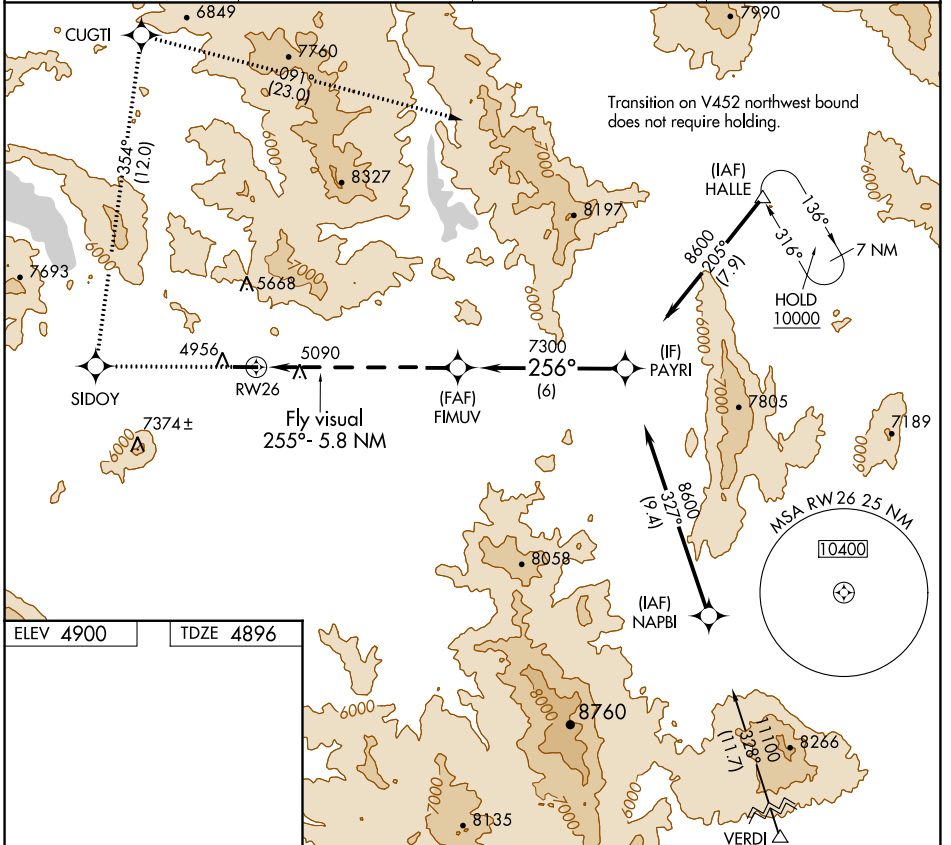
RNAV (GPS) Z RWY 26

NERVINO (002)

NA Use Reno/Stead altimeter setting; when not received, use Reno/Tahoe Intl altimeter setting and increase DA 180 feet.
13°C DME/DME RNP -0.3 NA.
 Helicopter visibility reduction below 3/4 SM not authorized.

MISSED APPROACH: Climb to 10000 direct SIDOY and right turn on track 354° to CUGTI and right turn on track 091° to HALLE and hold.

AWOS-2 119.35	RTS AWOS-3 135.175	NORCAL APP CON 126.3 353.9	UNICOM 122.8 (CTAF) 0
-------------------------	------------------------------	--------------------------------------	---------------------------------



SW-2, 11 JUL 2024 to 08 AUG 2024

SW-2, 11 JUL 2024 to 08 AUG 2024

ELEV 4900	TDZE 4896
-----------	-----------

Scale: 4651 X 75

Fly visual 255° - 5.8 NM

MIRL Rwy 8-26 0

10000	SIDOY	CUGTI	HALLE	VGSJ and RNAV glidepath not coincident (VGSJ Angle 3.50/TCH 50).
↑	↻ 354°	↻ 091°	△	
Fly visual 255° - 5.8 NM RWY26		FIMUV 7300	PAYRI 8600	GP 3.00° TCH 55
7.2 NM		6 NM		
CATEGORY	A	B	C	D
LPV DA	6787-2	1891 (1900-2)	6787-3	1891 (1900-3)