

APP CRS	Rwy Idg	<b>3000</b>
<b>302°</b>	TDZE	<b>18</b>
	Apt Elev	<b>18</b>

# RNAV (GPS) RWY 30

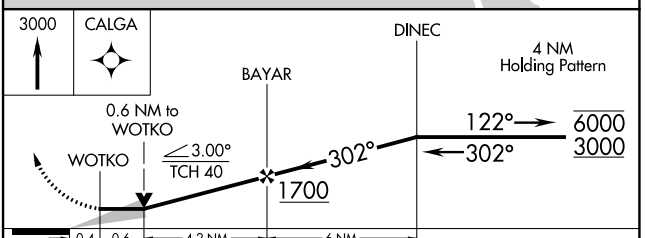
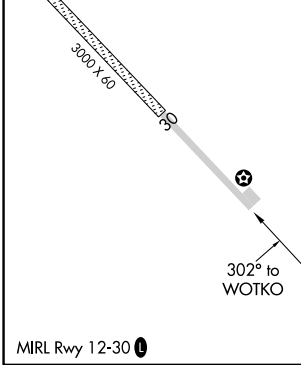
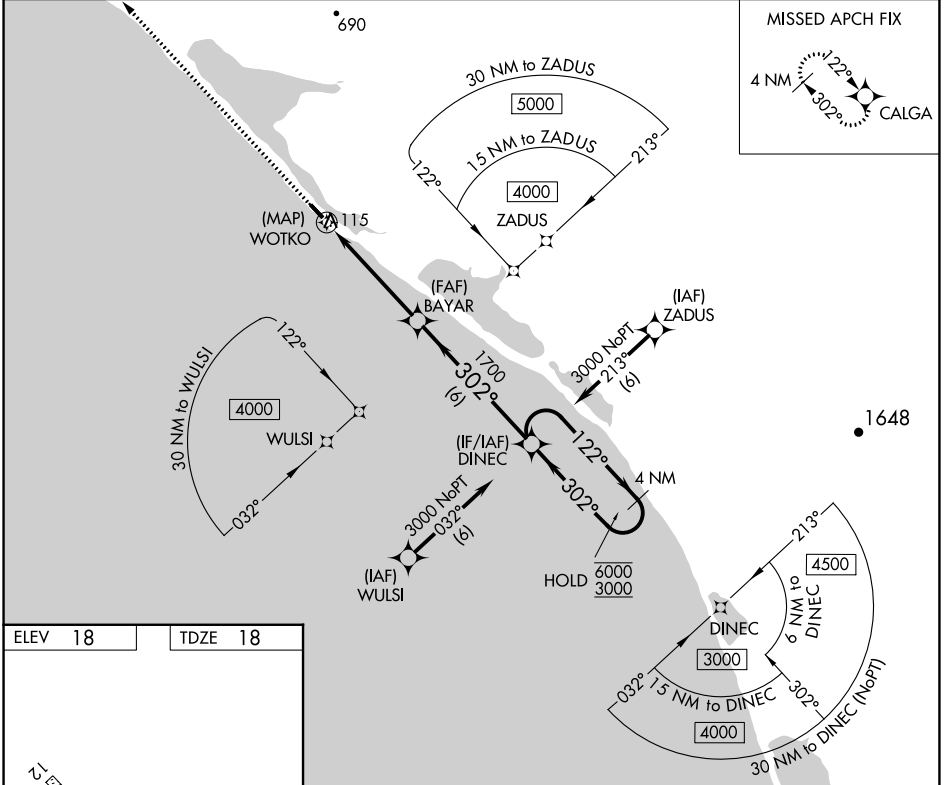
KIVALINA (KVL)(PAVL)

RNP APCH - GPS

▼  
▲ VDP NA with Noatak altimeter setting. When local altimeter setting not received, use Noatak altimeter setting and increase all MDAs 340 feet and visibility LNAV Cat C 1 SM, Circling Cat B ½ SM, and Circling Cat C 1 ¼ SM.

MISSED APPROACH: Climb to 3000 direct CALGA and hold, continue climb-in-hold to 3000.

ASOS <b>135.8</b>	WTK/PAWN AWOS-3P <b>135.75</b>	ANCHORAGE CENTER <b>119.2 263.0</b>	KOTZEBUE RADIO <b>122.55</b>	UNICOM <b>122.8 (CTAF)</b>
----------------------	-----------------------------------	--	---------------------------------	-------------------------------



CATEGORY	A	B	C	D
LNAV MDA	380-1 362 (400-1)			NA
CIRCLING	440-1 422 (500-1)	560-1 542 (600-1)	560-1½ 542 (600-1½)	NA

AK, 11 JUL 2024 to 05 SEP 2024

AK, 11 JUL 2024 to 05 SEP 2024