

APP CRS <b>247°</b>	Rwy Idg <b>3300</b>
	TDZE <b>115</b>
	Apt Elev <b>115</b>

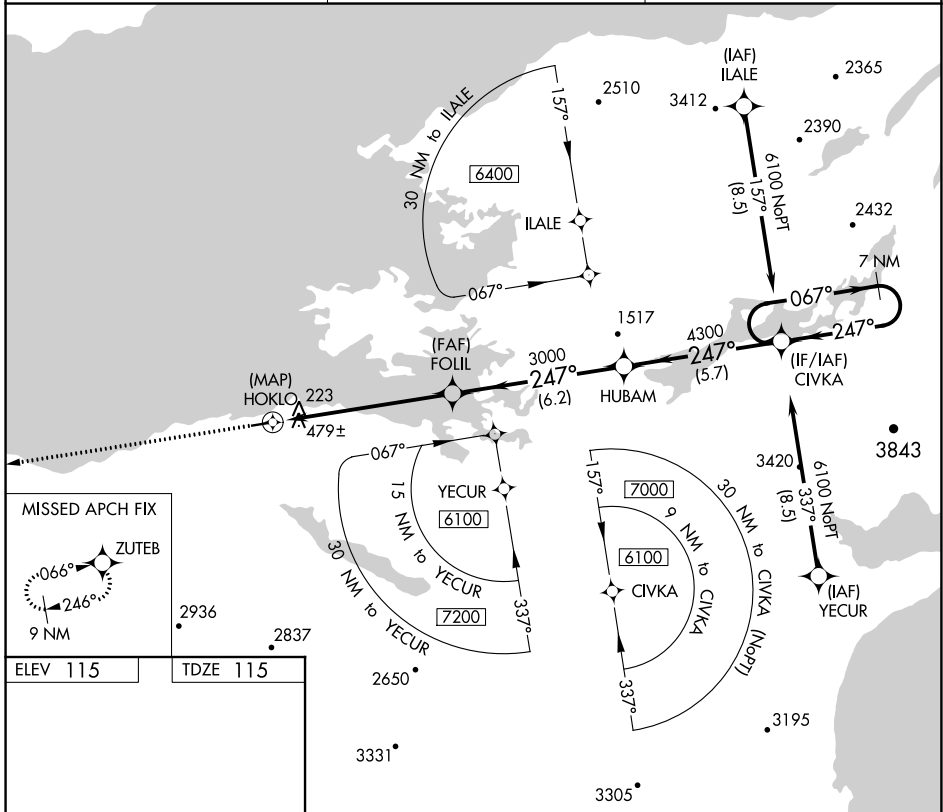
# RNAV (GPS) RWY 25

KOKHANOK (9K2) (PFKK)

**NA** Rwy 25 helicopter visibility reduction below 1 SM NA.  
DME/DME RNP-0.3 NA. Use Iliamna altimeter setting.  
Procedure NA at night.

**MISSED APPROACH:** Climb to 4400 direct ZUTEB and hold, continue climb-in-hold to 4400.

III/PAIL ASOS <b>134.95</b>	ANCHORAGE CENTER <b>118.8</b>	CTAF <b>122.9</b>
--------------------------------	----------------------------------	----------------------



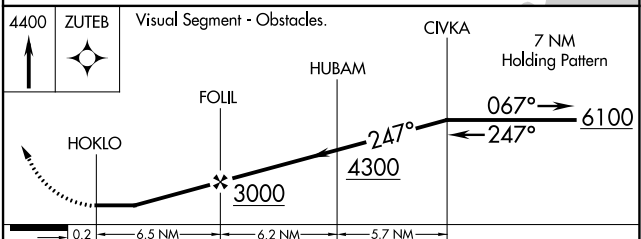
**MISSED APCH FIX**

ZUTEB  
066°  
246°  
9 NM

ELEV 115	TDZE 115
----------	----------

3300 X 75  
247°

REIL Rwy 7 and 25  
MIRL Rwy 7-25



CATEGORY	A	B	C	D
LNAV MDA	880-1 765 (800-1)	880-1¼ 765 (800-1¼)		NA
<b>C</b> CIRCLING	1040-1¼ 925 (1000-1¼)	1100-1½ 985 (1000-1½)		NA

AK, 11 JUL 2024 to 05 SEP 2024

AK, 11 JUL 2024 to 05 SEP 2024