

APP CRS	Rwy Idg	<b>3300</b>
<b>066°</b>	TDZE	<b>115</b>
	Apt Elev	<b>115</b>

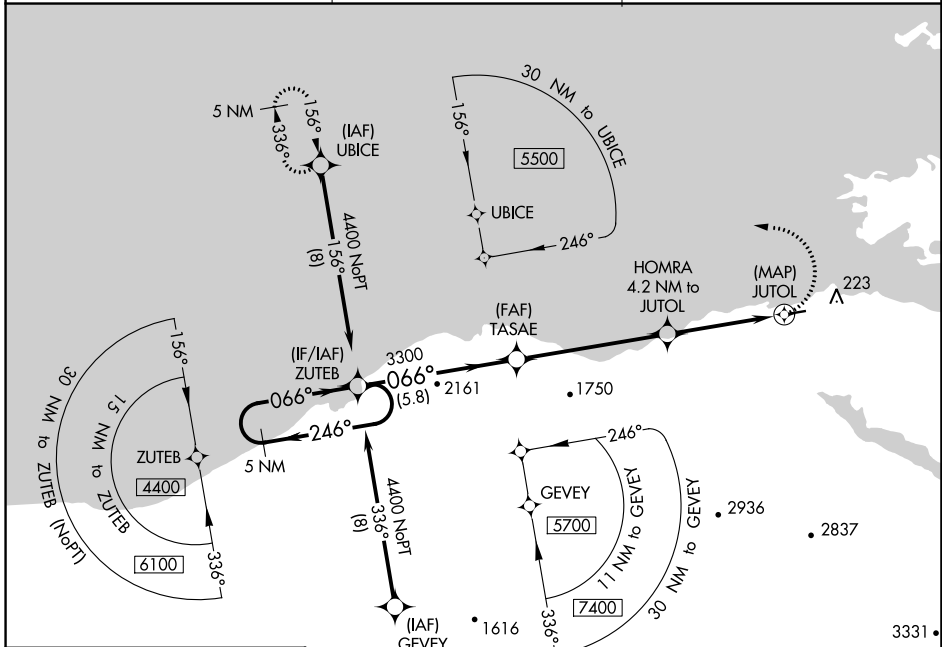
# RNAV (GPS) RWY 7

KOKHANOK (9K2) (PFKK)

**NA** Rwy 7 helicopter visibility reduction below 1 SM NA.  
DME/DME RNP-0.3 NA. Use Iliamna altimeter setting.  
Procedure NA at night.

**MISSED APPROACH:** Climbing left turn to 4400 direct UBICE and hold, continue climb-in-hold to 4400.

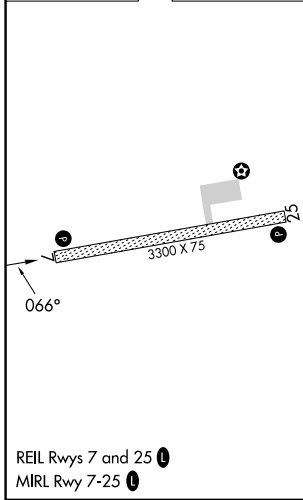
III/PAIL ASOS <b>134.95</b>	ANCHORAGE CENTER <b>118.8</b>	CTAF <b>122.9</b>
--------------------------------	----------------------------------	----------------------



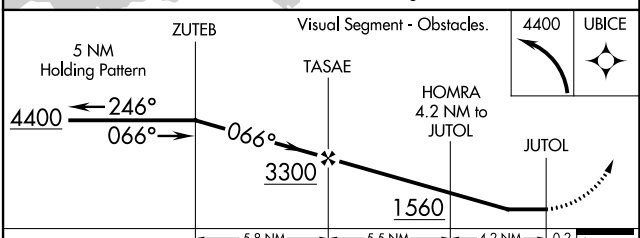
AK, 11 JUL 2024 to 05 SEP 2024

AK, 11 JUL 2024 to 05 SEP 2024

ELEV 115	TDZE 115
----------	----------



REIL Rws 7 and 25 **1**  
MIRL Rwy 7-25 **1**



CATEGORY	A	B	C	D
LNAV MDA	820-1	705 (800-1)	820-2	705 (800-2)
<b>C</b> CIRCLING	1040-1¼ 925 (1000-1¼)	1100-1½ 985 (1000-1½)	1100-3	985 (1000-3)