

APP CRS	Rwy Idg	2800
020°	TDZE	314
	Apt Elev	314

RNAV (GPS) RWY 2

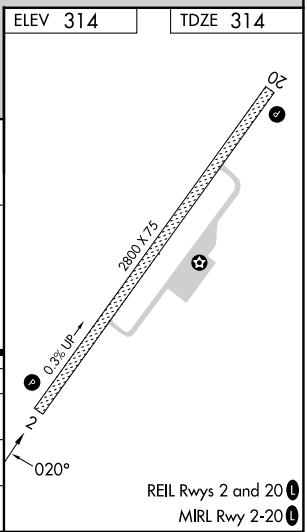
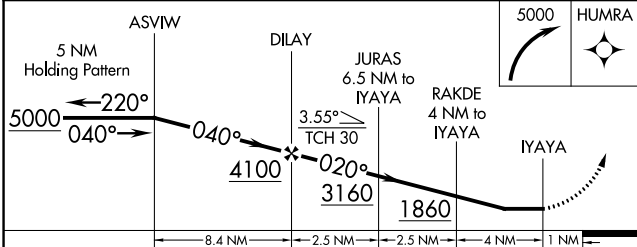
NONDALTON (5NN) (PANO)

RNP APCH.

⚠ NA When Iliamna altimeter setting not received, procedure NA.
⚠ NA Circling NA west of Rwy 2-20. Rwy 2 helicopter visibility reduction below 1 SM NA. Straight-In Rwy 2 NA at night, Circling Rwy 2 NA at night.

MISSED APPROACH: Climbing right turn to 5000 direct HUMRA and hold, continue climb-in-hold to 5000.
 *Missed approach requires minimum climb of 265 feet per NM to 2500.

IL/PAIL ASOS 134.95	ANCHORAGE CENTER 118.8	KENAI RADIO 122.2	CTAF 122.9
-------------------------------	----------------------------------	-----------------------------	----------------------



CATEGORY	A	B	C	D
LNAV MDA	1660-1¼ 1346 (1400-1¼)	1660-1½ 1346 (1400-1½)		NA
LNAV MDA*	1380-1¼ 1066 (1100-1¼)	1380-1½ 1066 (1100-1½)		NA
C CIRCLING	1660-1¼ 1346 (1400-1¼)	1660-1½ 1346 (1400-1½)		NA

AK, 11 JUL 2024 to 05 SEP 2024

AK, 11 JUL 2024 to 05 SEP 2024