

**TOP ALTITUDE:  
ASSIGNED BY ATC**

ANCHORAGE CENTER  
119.2 263.0  
CTAF  
122.7



TAKEOFF MINIMUMS

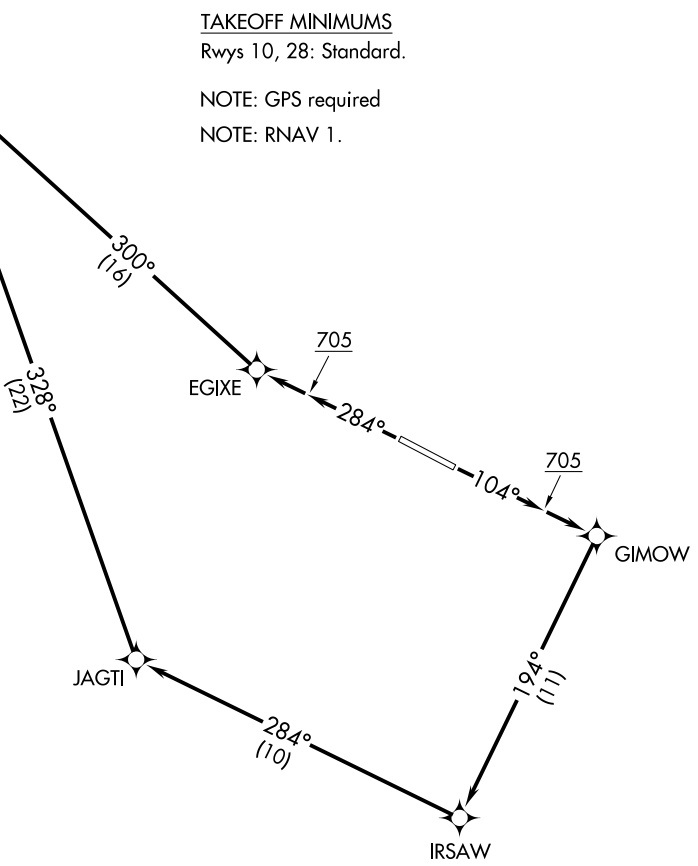
Rwys 10, 28: Standard.

NOTE: GPS required

NOTE: RNAV 1.

AK, 11 JUL 2024 to 05 SEP 2024

AK, 11 JUL 2024 to 05 SEP 2024



NOTE: Chart not to scale.



DEPARTURE ROUTE DESCRIPTION

TAKEOFF RUNWAY 10: Climb on heading 104° to 705, then direct GIMOW then on depicted route, thence. . .

TAKEOFF RUNWAY 28: Climb on heading 284° to 705, then direct EGIXE then on depicted route, thence. . . .

. . . .Maintain 4000 or as assigned by ATC.