

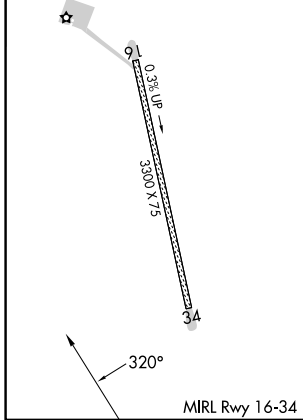
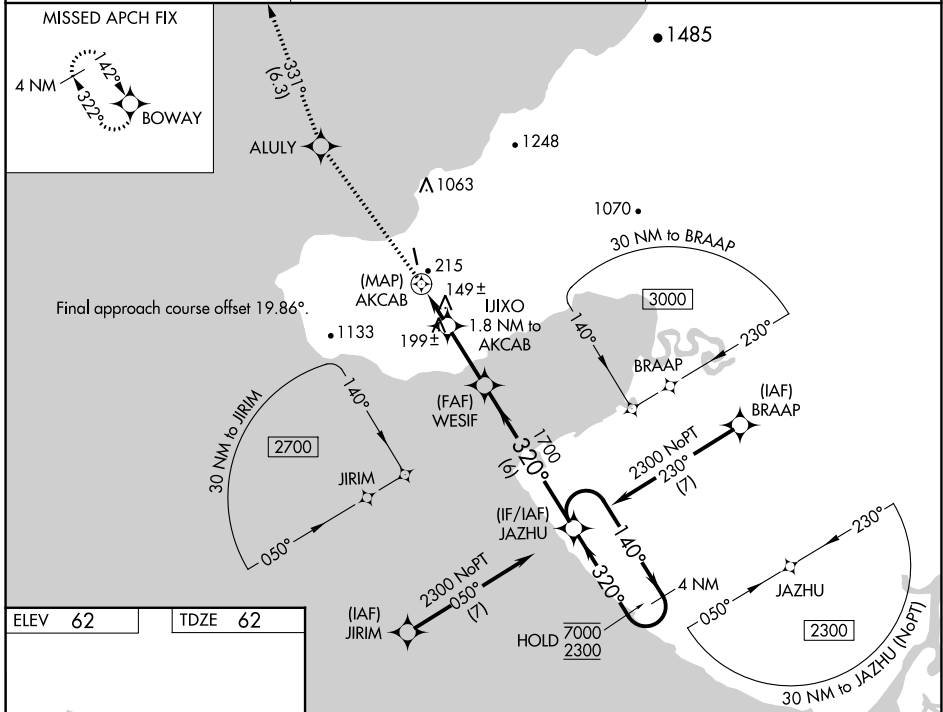
WAAS CH 86845 W34A	APP CRS 320°	Rwy Idg TDZE Apt Elev	3300 62 62
--	------------------------	-----------------------------	---------------------------------------

RNAV (GPS) RWY 34

TUNUNAK (4KA) (POKA)

RNP APCH - GPS.	MISSED APPROACH: Climb to 500, then climb to 2400 direct ALULY then on track 331° to BOWAY and hold.
<p>⚠ Circling NA east of Rwy 16-34. Rwy 34 helicopter visibility reduction below 3/4 SM NA. When local altimeter setting not received, use Toksook Bay altimeter setting and increase all MDAs 20 feet and LNAV visibility Cat C 1/8 SM.</p>	

AWOS-3P 118.25	ANCHORAGE CENTER 125.2 372.0	CTAF 122.9
--------------------------	--	----------------------



ELEV 62	TDZE 62	500		2400	ALULY	tr 331°	BOWAY	JAZHU	4 NM Holding Pattern
		↑		↑	✧	✧	✧	140° → 7000	← 320° 2300
		AKCAB		JIJIXO 1.8 NM to AKCAB	WESIF	JAZHU	1700		
		0.7		1.8 NM	2.5 NM	6 NM			
CATEGORY	A		B		C		D		
LP MDA	400-1		338 (400-1)				NA		
LNAV MDA	480-1		418 (500-1)		480-1 1/8		418 (500-1 1/8)		
CIRCLING	480-1		600-1		1120-3		NA		
	418 (500-1)		538 (600-1)		1058 (1100-3)				

AK, 11 JUL 2024 to 05 SEP 2024

AK, 11 JUL 2024 to 05 SEP 2024