

| | |
|------------------------|-------------------------|
| APP CRS 196° | Rwy Idg 3815 |
| | TDZE 1276 |
| | Apt Elev 1276 |

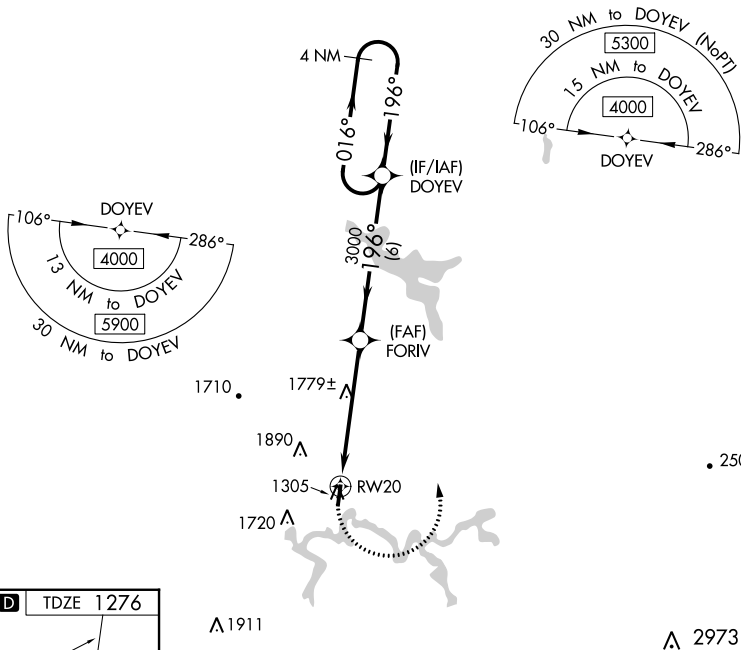
RNAV (GPS) RWY 20

BRAXTON COUNTY (48I)

NA DME/DME RNP-0.3 NA. Procedure NA at night. Helicopter visibility reduction below 1 SM NA. When local altimeter setting not received, use Clarksburg altimeter setting and increase all MDA 260 feet. Increase LNAV Cat A/B visibility ¼ mile, LNAV Cat C visibility ½ mile, and Circling Cat A visibility ¼ mile.

MISSED APPROACH: Climbing left turn to 4000 direct DOYEV and hold.

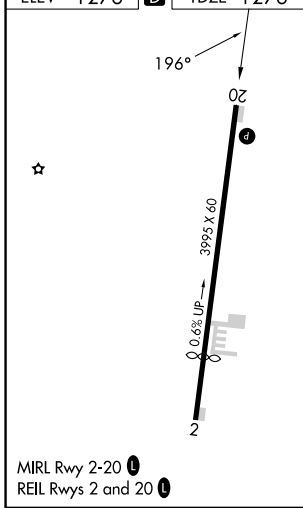
| | | |
|---------------------------|--|------------------------|
| AWOS-3P 118.225 | CLARKSBURG APP CON ★ 121.15 284.65 | CTAF 122.9 0 |
|---------------------------|--|------------------------|



NE-4, 11 JUL 2024 to 08 AUG 2024

NE-4, 11 JUL 2024 to 08 AUG 2024

| | | |
|-----------|----------|-----------|
| ELEV 1276 | D | TDZE 1276 |
|-----------|----------|-----------|



SUTTON, WEST VIRGINIA
Amdt 1 08JAN15

38°41'N-80°39'W

BRAXTON COUNTY (48I)

RNAV (GPS) RWY 20

| | | | | |
|-------------------|--|----------------------------|---------------------------|----------------------|
| 4000 DOYEV | VGSi and descent angles not coincident (VGSi Angle 4.00/TCH 40). | | DOYEV | 4 NM Holding Pattern |
| RW20 | FORIV | 3000 | 196° | 016° → 4000 |
| 5.3 NM | | 6 NM | | |
| CATEGORY | A | B | C | D |
| LNAV MDA | 2060-1 784 (800-1) | 2060-1 ¼ 784 (800-1 ¼) | 2060-2 ½ 784 (800-2 ½) | NA |
| C CIRCLING | 2060-1 784 (800-1) | 2240-1 ½ 964 (1000-1 ½) | 2240-3 964 (1000-3) | NA |