

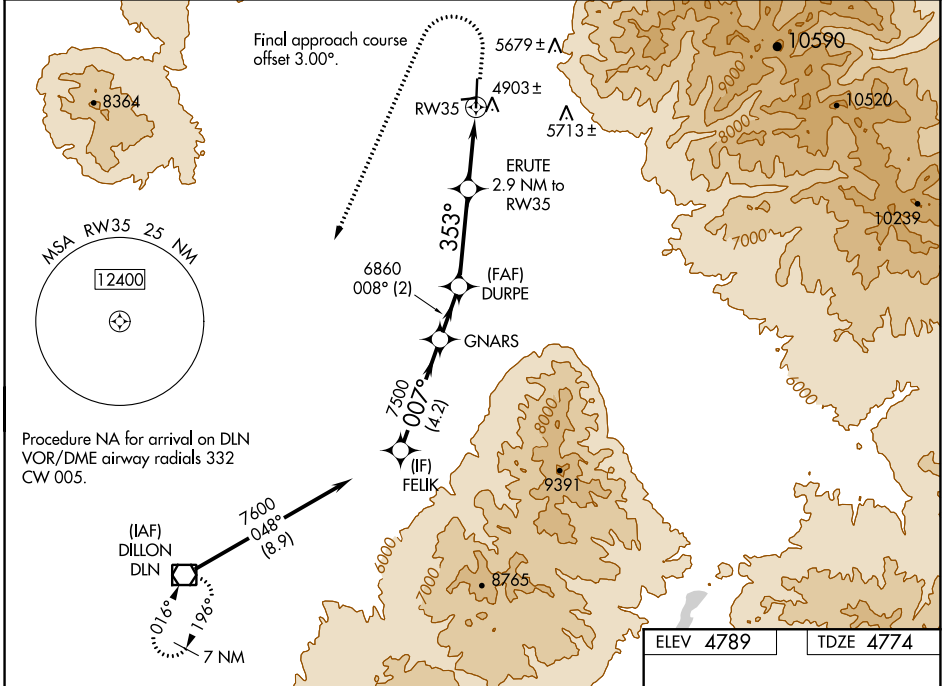
WAAS CH <b>42940</b> <b>W35A</b>	APP CRS <b>353°</b>	Rwy Idg TDZE Apt Elev	<b>6000</b> <b>4774</b> <b>4789</b>
--	------------------------	-----------------------------	---

# RNAV (GPS) RWY 35

RUBY VALLEY FLD (RVF)

RNP APCH - GPS.	MISSED APPROACH: (Do not exceed 185K until DLN VOR/DME) Climb to 5500 then climbing left turn to 11100 direct DLN VOR/DME and hold, continue climb-in-hold to 11100.
<p><b>∇</b> Circling NA to Rwy 7 and 25. Circling NA east of Rwy 17-35.</p> <p><b>⚠</b> For uncompensated Baro-VNAV systems, LNAV/VNAV NA below -24°C or above 54°C.</p>	

AWOS-3PT <b>119.025</b>	SALT LAKE CENTER <b>132.4 338.3</b>	CTAF <b>122.90</b>
----------------------------	--	-----------------------



NW-1, 11 JUL 2024 to 08 AUG 2024

NW-1, 11 JUL 2024 to 08 AUG 2024

	ELEV 4789	TDZE 4774
	VGSi and RNAV glidepath not coincident (VGSi Angle 3.00/TCH 38).	
	FELIX	GNARS
	DURPE	ERUTE
	RWY 35	DLN
	7600	5500
	7500	11100
	6860	5740
	4.2 NM	2 NM
	3.5 NM	1.2 NM
	1.8 NM	1.8 NM
	GP 3.00°	TCH 45
	2.0% UP	2866 X 100
	0.5% UP	35
	353° to RWY 35	MIRL Rwy 17-35
CATEGORY	A	B
LPV DA	5024-1	250 (300-1)
LNAV/VNAV DA	5196-1¼	422 (500-1¼)
LNAV MDA	5360-1 586 (600-1)	5360-1¾ 586 (600-1¼)
<b>C</b> CIRCLING	5360-1 571 (600-1)	5360-1¾ 571 (600-1¼) 5460-2¼ 671 (700-2¼)