

WAAS CH 97504 W36A	APP CRS 355°	Rwy Idg 6610 TDZE 164 Apt Elev 166
--	------------------------	---

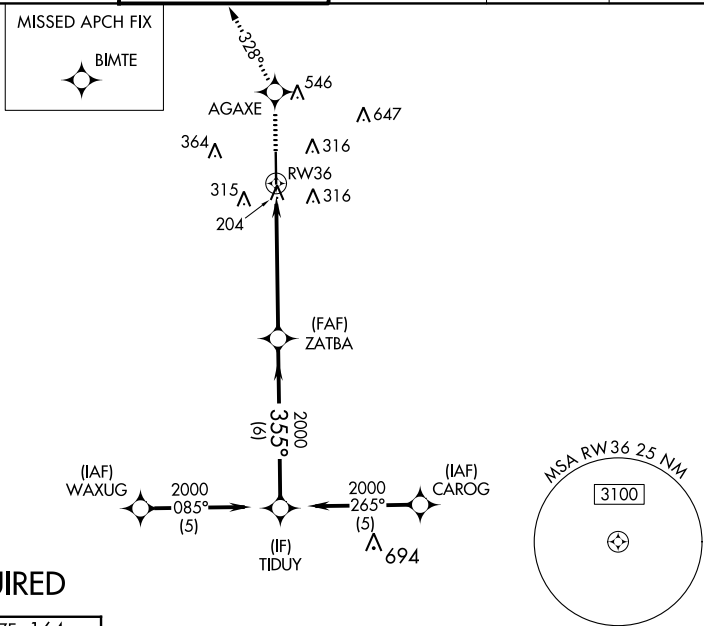
RNAV (GPS) RWY 36

HOUSTON EXEC (TME)

⚠ Baro-VNAV NA when using David Wayne Hooks Meml altimeter setting. For uncompensated Baro-VNAV systems, LNAV/VNAV NA below -15°C (5°F) or above 48°C (118°F). DME/DME RNP-0.3 NA. VDP NA when using David Wayne Hooks Meml altimeter setting. When local altimeter setting not received, use David Wayne Hooks Meml altimeter setting and increase LPV DA to 471 feet, LNAV/VNAV DA to 719 feet; increase all MDA 60 feet. Increase LNAV/VNAV visibility ¼ mile all Cats and LNAV and circling Cat C/D ¼ mile.

MISSED APPROACH: Climb to 2000 direct AGAXE and via 328° track to BIMTE and hold.

ATIS 119.525	HOUSTON APP CON 123.8 257.7	EXECUTIVE TOWER ★ 126.975 (CTAF) 0	GND CON 132.075	CLNC DEL 132.075	UNICOM 122.975
------------------------	---------------------------------------	--	---------------------------	----------------------------	--------------------------



RADAR REQUIRED

ELEV 166	TDZE 164
-----------------	-----------------

REIL Rwy 18-36 **0**
MIRL Rwy 18-36 **0**

2000	AGAXE	328° tr	BIMTE
*INAV only.			
Procedure Turn NA TIDUY 2000 GP 3.00° TCH 40			
CATEGORY	A	B	C
LPV DA	414-1 250 (300-1)		
LNAV/VNAV DA	662-1¾ 498 (500-1¾)		
LNAV MDA	620-1 456 (500-1)	620-1¼ 456 (500-1¼)	620-1½ 456 (500-1½)
CIRCLING	820-1 654 (700-1)	860-2 694 (700-2)	1000-2¾ 834 (900-2¾)

SC-5, 11 JUL 2024 to 08 AUG 2024

SC-5, 11 JUL 2024 to 08 AUG 2024