


| | | |
|--|------------------------|---|
| WAAS CH 72725 W20A | APP CRS 199° | Rwy Idg 5500 TDZE 144 Apt Elev 144 |
|--|------------------------|---|

RNAV (GPS) RWY 20

HALIFAX/NORTHAMPTON RGNL (IXA)

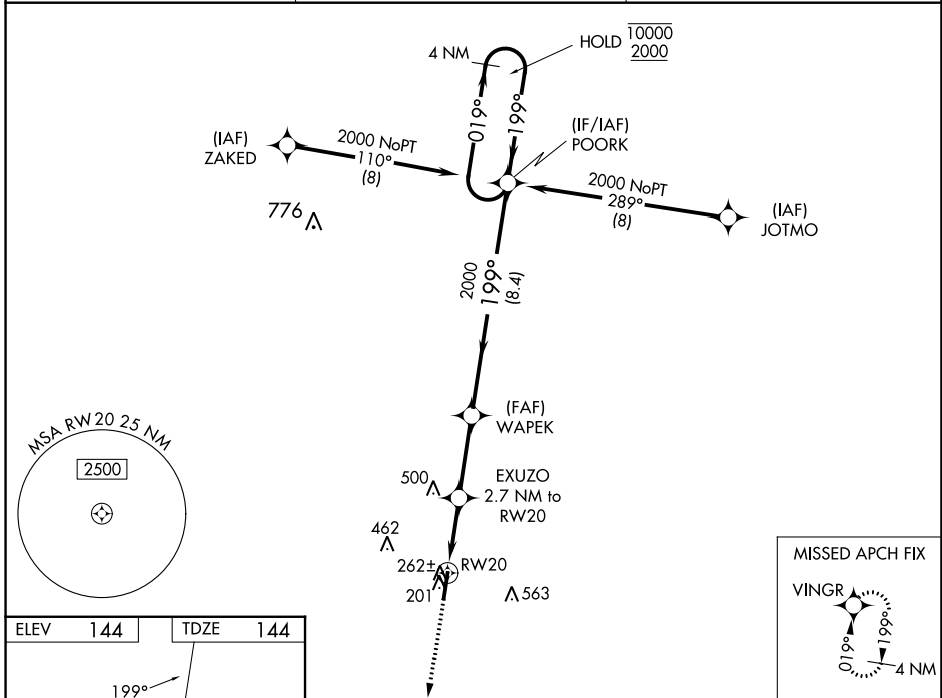
RNP APCH-GPS.

⚠ Circling NA east of Rwy 2-20. Rwy 20 helicopter visibility reduction below 3/4 SM NA. Inop table does not apply to LPV. For uncompensated Baro-VNAV systems, LNAV/VNAV NA below -1.5°C or above 54°C. For inop ALS increase LNAV/VNAV visibility all Cats to 3/8 SM and LNAV visibility all Cats to 1 SM.

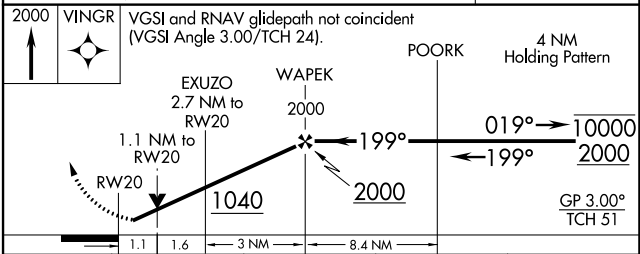
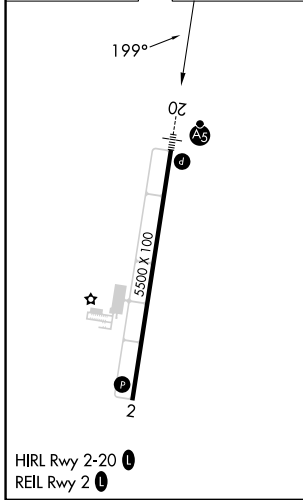
MALSR 


MISSED APPROACH: Climb to 2000 direct VINGR and hold.

| | | |
|----------------------------|---|-----------------------------------|
| AWOS-3PT 119.975 | WASHINGTON CENTER 132.025 290.425 | UNICOM 123.075 (CTAF) 0 |
|----------------------------|---|-----------------------------------|



| | |
|----------|----------|
| ELEV 144 | TDZE 144 |
|----------|----------|



| CATEGORY | A | B | C | D |
|--|----------------------|----------------------|------------------------------|------------------------------|
| LPV DA | | 394-3/4 | 250 (300-3/4) | |
| LNAV/VNAV DA | | 423-3/4 | 279 (300-3/4) | |
| LNAV MDA | | 520-3/4 | 376 (400-3/4) | |
|  CIRCLING | 580-1 436 (500-1) | 600-1 456 (500-1) | 780-1 3/4 636 (700-1 3/4) | 860-2 1/4 716 (800-2 1/4) |

SE-2, 11 JUL 2024 to 08 AUG 2024

SE-2, 11 JUL 2024 to 08 AUG 2024