

WAAS CH <b>78142</b> <b>W17A</b>	APP CRS <b>172°</b>	Rwy Idg <b>4600</b> TDZE <b>3187</b> Apt Elev <b>3187</b>
--	------------------------	---

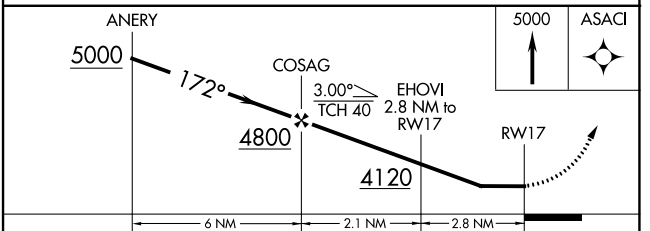
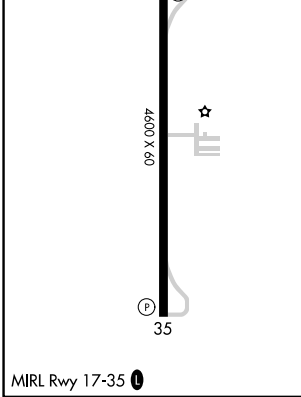
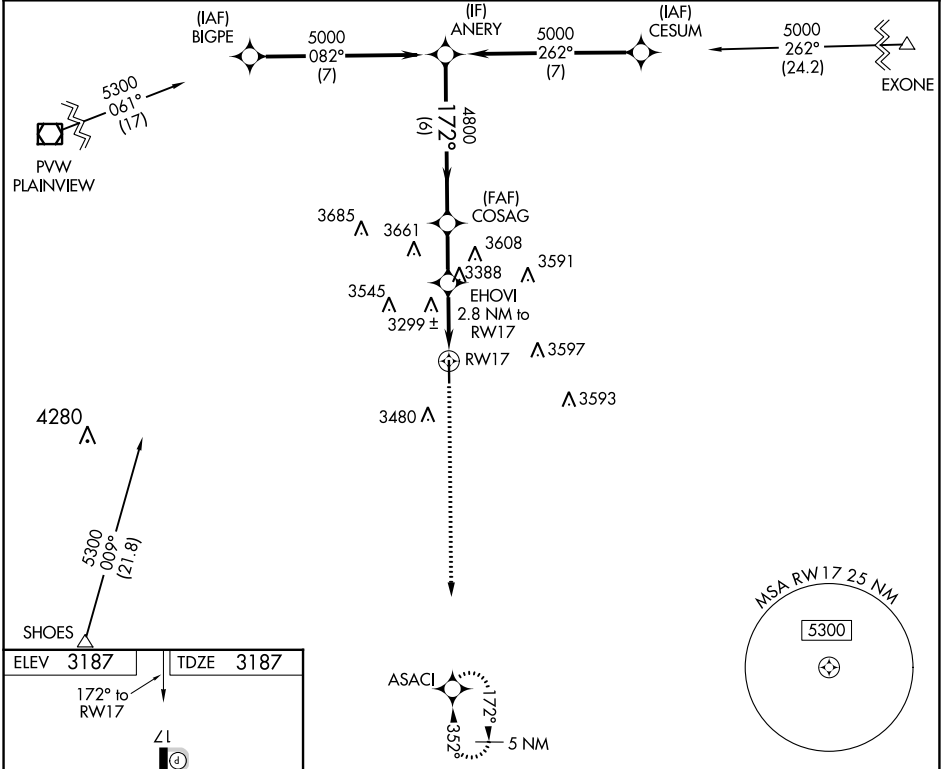
# RNAV (GPS) RWY 17

FLOYDADA MUNI (41F')

RNP APCH. **▽** Rwy 17 helicopter visibility reduction below 3/4 SM NA. Use Plainview altimeter setting, when not received, use Lubbock altimeter setting and increase all MDA 20 feet; increase LNAV Cat C visibility 3/8 SM and Circling Cat C visibility 1/4 SM. **▲** NA

MISSED APPROACH: Climb to 5000 direct ASACI and hold.

PVV AWOS-3 <b>119.675</b>	LUBBOCK APP CON <b>119.2 351.8</b>	UNICOM <b>122.8 (CTAF) 0</b>
------------------------------	---------------------------------------	---------------------------------



CATEGORY	A	B	C	D
LP MDA	3640-1	453 (500-1)	3640-1 3/8 453 (500-1 3/8)	NA
LNAV MDA	3720-1	533 (600-1)	3720-1 1/2 533 (600-1 1/2)	NA
<b>C</b> CIRCLING	3840-1 653 (700-1)	3920-1 733 (800-1)	3980-2 1/4 793 (800-2 1/4)	NA

SC-2, 11 JUL 2024 to 08 AUG 2024

SC-2, 11 JUL 2024 to 08 AUG 2024