

WAAS CH <b>56635</b> <b>W36A</b>	APP CRS <b>002°</b>	Rwy Idg TDZE Apt Elev	<b>4000</b> <b>936</b> <b>936</b>
--	------------------------	-----------------------------	---

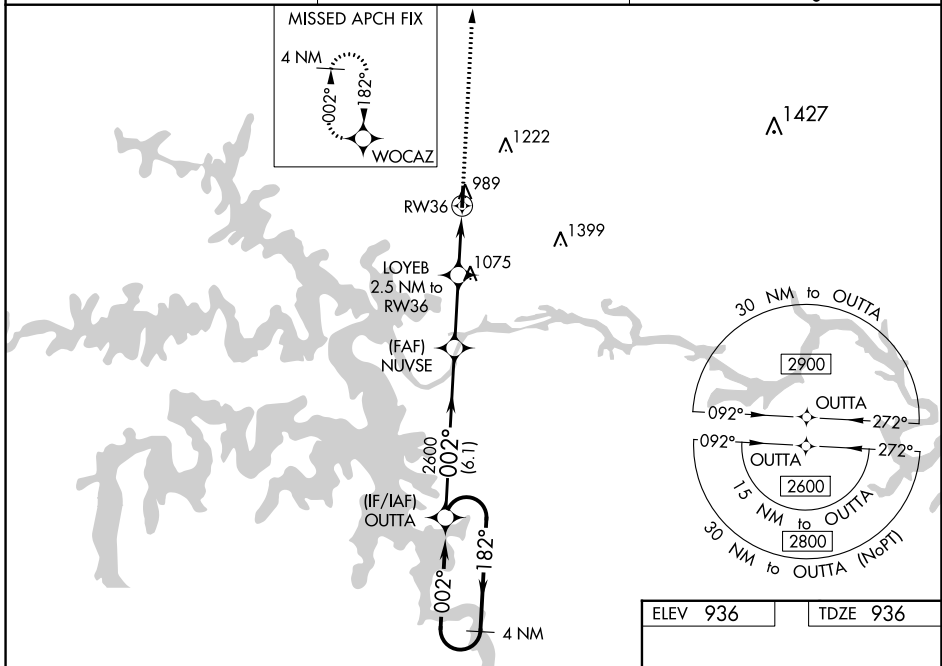
# RNAV (GPS) RWY 36

WARSAW MUNI (R.A.W)

**NA** Baro-VNAV and VDP NA when using Clinton altimeter setting. For uncompensated Baro-VNAV systems, LNAV/VNAV NA below -1.6°C (4°F) or above 54°C (130°F). DME/DME RNP-0.3 NA. Helicopter visibility reduction below 1 SM NA. When local altimeter not received, use Clinton altimeter setting and increase all DA 53 feet and all MDA 60 feet. Increase LNAV/VNAV all Cats visibility to 1½ mile, LNAV Cats C/D visibility to 1¾ mile and Circling Cat C visibility to 2 and Cat D visibility to 2¼ mile.

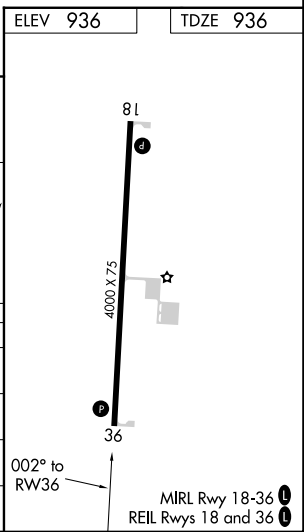
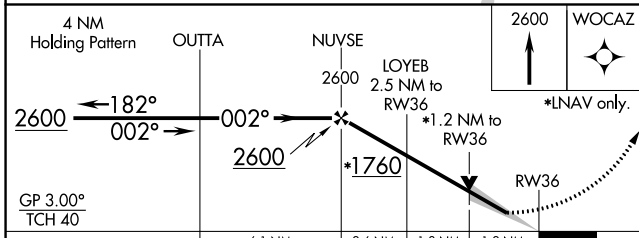
**MISSED APPROACH:**  
Climb to 2600 direct WOCAZ and hold.

AWOS-3PT <b>118.325</b>	WHITEMAN APP CON * <b>127.45 284.0</b>	CTAF <b>122.9</b>
----------------------------	---	----------------------



NC-3, 11 JUL 2024 to 08 AUG 2024

NC-3, 11 JUL 2024 to 08 AUG 2024



CATEGORY	A	B	C	D
LPV DA		1136-1	200 (200-1)	
LNAV/VNAV DA		1215-1	279 (300-1)	
LNAV MDA	1340-1	404 (500-1)	1340-1 1/8	404 (500-1 1/8)
CIRCLING	1340-1 404 (500-1)	1400-1 464 (500-1)	1580-1 3/4 644 (700-1 3/4)	1580-2 644 (700-2)

MIRL Rwy 18-36  
REIL Rwys 18 and 36